

Anti-TRAF2 antibody (C-Term) (STJ70887)
STJ70887

GENERAL INFORMATION

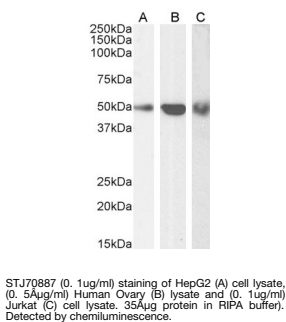
Product Type	Primary antibodies
Short Description	Goat polyclonal antibody anti-TRAF2 (C-Term) is suitable for use in ELISA, Western Blot, Immunohistochemistry, Immunofluorescence and Flow Cytometry research applications.
Applications	Pep-ELISA/WB/IHC/IF/FC
Host/Source	Goat
Reactivity	Human/Mouse/Rat/Dog/Cow

PRODUCT PROPERTIES

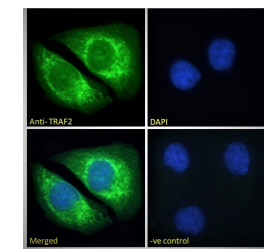
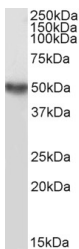
Clonality	Polyclonal
Clone ID	
Concentration	0.5 mg/mL
Conjugation	Unconjugated
Purification	Purified from goat serum by ammonium sulphate precipitation followed by antigen affinity chromatography using the immunizing peptide.
Dilution Range	Peptide ELISA: antibody detection limit dilution 1:128000. WB: Approx 50kDa band observed in Human Ovary and Mouse Testis lysates and in lysates of cell lines HepG2 and Jurkat. Preliminary testing also showed a band at approx 50kDa in U937, NIH3T
Formulation	0.5 mg/ml in Tris saline, 0.02% sodium azide, pH7.3 with 0.5% bovine serum albumin. NA
Isotype	IgG
Storage Instruction	Store at -20°C on receipt and minimise freeze-thaw cycles.

TARGET INFORMATION

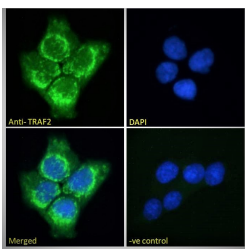
Gene ID	7186
Gene Symbol	TRAF2
Uniprot ID	TRAF2_HUMAN
Immunogen	
Immunogen Region	C-Term
Specificity	
Immunogen Sequence	KMEAKNSYVRDD



STJ70887 (0.3 µg/ml) staining of Mouse Testes lysate (35 µg protein in RIPA buffer). Detected by chemiluminescence.



STJ70887 Immunofluorescence analysis of paraformaldehyde fixed HeLa cells, permeabilized with 0.15% Triton. Primary incubation 1hr (10 µg/ml) followed by Alexa Fluor 488 secondary antibody (2 µg/ml) showing cytoplasmic and endoplasmic reticulum staining. The nuclear stain is DAPI (blue). Negative control: Unimmunized goat IgG (10 µg/ml) followed by Alexa Fluor 488 secondary antibody (2 µg/ml).



STJ70887 Immunofluorescence analysis of paraformaldehyde fixed A431 cells, permeabilized with 0.15% Triton. Primary incubation 1hr (10 µg/ml) followed by Alexa Fluor 488 secondary antibody (2 µg/ml) showing cytoplasmic and endoplasmic reticulum staining. The nuclear stain is DAPI (blue). Negative control: Unimmunized goat IgG (10 µg/ml) followed by Alexa Fluor 488 secondary antibody (2 µg/ml).