

Anti-DCP1A antibody (C-Term) (STJ70870)

STJ70870

GENERAL INFORMATION

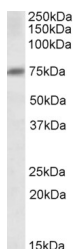
Product Type	Primary antibodies
Short Description	Goat polyclonal antibody anti-DCP1A (C-Term) is suitable for use in ELISA and Western Blot research applications.
Applications	Pep-ELISA/WB
Host/Source	Goat
Reactivity	Human/Mouse/Rat

PRODUCT PROPERTIES

Clonality	Polyclonal
Clone ID	
Concentration	0.5 mg/mL
Conjugation	Unconjugated
Purification	Purified from goat serum by ammonium sulphate precipitation followed by antigen affinity chromatography using the immunizing peptide.
Dilution Range	Peptide ELISA: antibody detection limit dilution 1:16000. WB: Approx 75kDa band observed in lysates of cell line A431 and HeLa (calculated MW of 63.3kDa according to NP_060873.3). Recommended concentration: 1-3µg/ml. Primary incubation was 1 hour
Formulation	0.5 mg/ml in Tris saline, 0.02% sodium azide, pH7.3 with 0.5% bovine serum albumin. NA
Isotype	IgG
Storage Instruction	Store at -20°C on receipt and minimise freeze-thaw cycles.

TARGET INFORMATION

Gene ID	55802
Gene Symbol	DCP1A
Uniprot ID	DCP1A_HUMAN
Immunogen	
Immunogen Region	C-Term
Specificity	
Immunogen Sequence	QVLTKNKDNHN



STJ70870 (1µg/ml) staining of lysate of cell line A431 (35µg protein in RIPA buffer). Detected by chemiluminescence.

This product is suitable for in-vitro studies under the RESEARCH USE ONLY [RUO] licence. This product must not be used as for diagnostic or other medical purposes.
St John's Laboratory Ltd, Knowledge Dock Business Centre, University Way, London, E16 2RD | Tel: 0208 223 3081