

Anti-PARP2 antibody (Internal) (STJ70857)

STJ70857

GENERAL INFORMATION

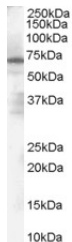
Product Type	Primary antibodies
Short Description	Goat polyclonal antibody anti-PARP2 (Internal) is suitable for use in ELISA, Western Blot and Immunohistochemistry research applications.
Applications	Pep-ELISA/WB/IHC
Host/Source	Goat
Reactivity	Human

PRODUCT PROPERTIES

Clonality	Polyclonal
Clone ID	
Concentration	0.5 mg/mL
Conjugation	Unconjugated
Purification	Purified from goat serum by ammonium sulphate precipitation followed by antigen affinity chromatography using the immunizing peptide.
Dilution Range	Peptide ELISA: antibody detection limit dilution 1:8000. WB: Approx 70kDa band observed in Human Spleen lysates (calculated MW of 60.8kDa according to NP_005475.1. Recommended concentration: 1-3µg/ml. IHC: Paraffin embedded Human Skin and Adr
Formulation	0.5 mg/ml in Tris saline, 0.02% sodium azide, pH7.3 with 0.5% bovine serum albumin. NA
Isotype	IgG
Storage	Store at -20°C on receipt and minimise freeze-thaw cycles.
Instruction	

TARGET INFORMATION

Gene ID	10038
Gene Symbol	PARP2
Uniprot ID	PARP2_HUMAN
Immunogen	
Immunogen Region	Internal
Specificity	
Immunogen Sequence	LDLFEVEKDGEKE



STJ70857 (1µg/ml) staining of Human Spleen Lysate (35µg protein in RIPA buffer). Primary incubation was 1 hour. Detected by chemiluminescence.