

## Anti-ERG antibody (C-Term) (STJ70848)

STJ70848

### GENERAL INFORMATION

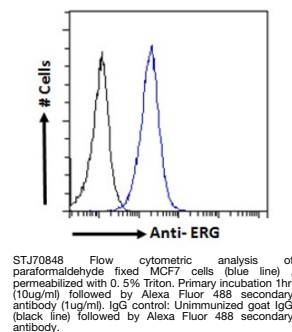
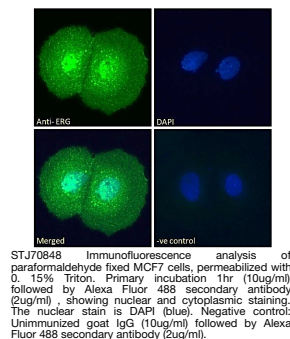
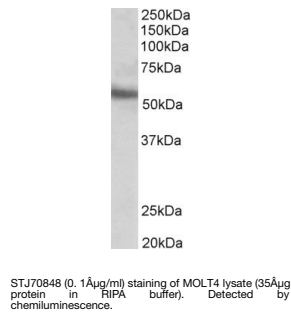
|                          |   |
|--------------------------|---|
| <b>Product Type</b>      | Primary antibodies  |
| <b>Short Description</b> | Goat polyclonal antibody anti-ERG (C-Term) is suitable for use in ELISA, Western Blot, Flow Cytometry and Immunofluorescence research applications. |
| <b>Applications</b>      | Pep-ELISA/WB/FC/IF  |
| <b>Host/Source</b>       | Goat  |
| <b>Reactivity</b>        | Human   |

### PRODUCT PROPERTIES

|                            |   |
|----------------------------|---|
| <b>Clonality</b>           | Polyclonal  |
| <b>Clone ID</b>            |   |
| <b>Concentration</b>       | 0.5 mg/mL   |
| <b>Conjugation</b>         | Unconjugated  |
| <b>Purification</b>        | Purified from goat serum by ammonium sulphate precipitation followed by antigen affinity chromatography using the immunizing peptide.   |
| <b>Dilution Range</b>      | Peptide ELISA: antibody detection limit dilution 1:16000.<br>WB: Approx 55kDa band observed in lysates of cell line MOLT4 (calculated MW of 53.8kDa according to NP_891548.1).<br>Recommended concentration: 0.1-0.3µg/ml. Primary incubation 1 hour at room temperature. |
| <b>Formulation</b>         | 0.5 mg/ml in Tris saline, 0.02% sodium azide, pH7.3 with 0.5% bovine serum albumin. NA  |
| <b>Isotype</b>             | IgG   |
| <b>Storage Instruction</b> | Store at -20°C on receipt and minimise freeze-thaw cycles.  |

### TARGET INFORMATION

|                           |   |
|---------------------------|---|
| <b>Gene ID</b>            | 2078  |
| <b>Gene Symbol</b>        | ERG   |
| <b>Uniprot ID</b>         | ERG_HUMAN   |
| <b>Immunogen</b>          |   |
| <b>Immunogen Region</b>   | C-Term  |
| <b>Specificity</b>        | This antibody is expected to recognise all reported isoforms (NP_891548.1; NP_004440.1; NP_001129626.1; NP_001129627.1; NP_001230358.1) |
| <b>Immunogen Sequence</b> | PNTRLPTSHMPHS   |



This product is suitable for in-vitro studies under the RESEARCH USE ONLY [RUO] licence. This product must not be used as for diagnostic or other medical purposes.  
St John's Laboratory Ltd, Knowledge Dock Business Centre, University Way, London, E16 2RD | Tel: 0208 223 3081