

Anti-ROBO1/DUTT1 antibody (Internal) (STJ70835)

STJ70835

GENERAL INFORMATION

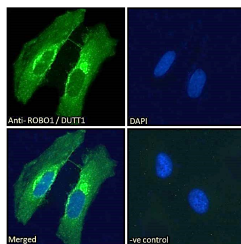
Product Type	Primary antibodies
Short Description	Goat polyclonal antibody anti-ROBO1/DUTT1 (Internal) is suitable for use in ELISA, Immunofluorescence and Immunohistochemistry research applications.
Applications	Pep-ELISA/IF/IHC
Host/Source	Goat
Reactivity	Human/Mouse/Rat/Dog/Cow

PRODUCT PROPERTIES

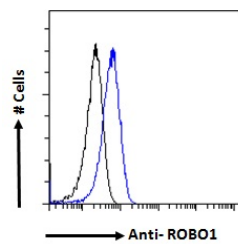
Clonality	Polyclonal
Clone ID	
Concentration	0.5 mg/mL
Conjugation	Unconjugated
Purification	Purified from goat serum by ammonium sulphate precipitation followed by antigen affinity chromatography using the immunizing peptide.
Dilution Range	Peptide ELISA: antibody detection limit dilution 1:16000. IHC: Paraffin embedded Human Brain (Cortex) and Kidney. Recommended concentration: 5-6µg/ml. IF: Strong expression of the protein seen in the Plasma membrane and Golgi/ER of HeLa and U
Formulation	0.5 mg/ml in Tris saline, 0.02% sodium azide, pH7.3 with 0.5% bovine serum albumin. NA
Isotype	IgG
Storage	Store at -20°C on receipt and minimise freeze-thaw cycles.
Instruction	

TARGET INFORMATION

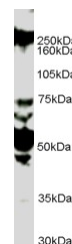
Gene ID	6091
Gene Symbol	ROBO1
Uniprot ID	ROBO1_HUMAN
Immunogen	
Immunogen	Internal
Region	
Specificity	Not expected to cross-react with ROBO2 or ROBO3.
Immunogen	GDVLSNKNEMK
Sequence	



STJ70835 Immunofluorescence analysis of paraformaldehyde fixed HeLa cells, permeabilized with 0.15% Triton. Primary incubation 1hr (10µg/ml) followed by Alexa Fluor 488 secondary antibody (2µg/ml), showing Golgi and membrane staining. The nuclear stain is DAPI (blue). Negative control: Unimmunized goat IgG (10µg/ml) followed by Alexa Fluor 488 secondary antibody (2µg/ml).



STJ70835 Flow cytometric analysis of paraformaldehyde fixed HeLa cells (blue line), permeabilized with 0.15% Triton. Primary incubation overnight (10µg/ml) followed by Alexa Fluor 488 secondary antibody (1µg/ml). IgG control: Unimmunized goat IgG (black line) followed by Alexa Fluor 488 secondary antibody.



STJ70835 (1µg/ml) staining of HUVEC lysate (35µg protein in RIPA buffer). Detected by chemiluminescence.

This product is suitable for in-vitro studies under the RESEARCH USE ONLY [RUO] licence. This product must not be used as for diagnostic or other medical purposes.

St John's Laboratory Ltd, Knowledge Dock Business Centre, University Way, London, E16 2RD | Tel: 0208 223 3081