

Anti-ROBO3 antibody (Internal) (STJ70834)

STJ70834

GENERAL INFORMATION

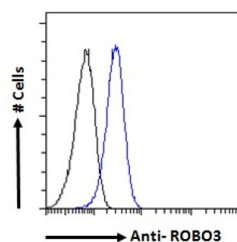
Product Type	Primary antibodies
Short Description	Goat polyclonal antibody anti-ROBO3 (Internal) is suitable for use in ELISA and Flow Cytometry research applications.
Applications	Pep-ELISA/FC
Host/Source	Goat
Reactivity	Human/Dog

PRODUCT PROPERTIES

Clonality	Polyclonal
Clone ID	
Concentration	0.5 mg/mL
Conjugation	Unconjugated
Purification	Purified from goat serum by ammonium sulphate precipitation followed by antigen affinity chromatography using the immunizing peptide.
Dilution Range	Peptide ELISA: antibody detection limit dilution 1:64000. FC: Flow cytometric analysis of U2OS cells. Recommended concentration: 10ug/ml. This antibody was successfully used on rheumatoid arthritis synovial fibroblasts (RASf) : Denk et al (2010) P
Formulation	0.5 mg/ml in Tris saline, 0.02% sodium azide, pH7.3 with 0.5% bovine serum albumin. NA
Isotype	IgG
Storage Instruction	Store at -20°C on receipt and minimise freeze-thaw cycles.

TARGET INFORMATION

Gene ID	64221
Gene Symbol	ROBO3
Uniprot ID	ROBO3_HUMAN
Immunogen	
Immunogen Region	Internal
Specificity	
Immunogen Sequence	RKDGARLKEEEGR



STJ70834 Flow cytometric analysis of paraformaldehyde fixed U2OS cells (blue line), permeabilized with 0.5% Triton. Primary incubation 1hr (10ug/ml) followed by Alexa Fluor 488 secondary antibody (1ug/ml). IgG control: Unimmunized goat IgG (black line) followed by Alexa Fluor 488 secondary antibody.

This product is suitable for in-vitro studies under the RESEARCH USE ONLY [RUO] licence. This product must not be used as for diagnostic or other medical purposes.
St John's Laboratory Ltd, Knowledge Dock Business Centre, University Way, London, E16 2RD | Tel: 0208 223 3081