

Anti-PDE4D antibody (C-Term) (STJ70831)

STJ70831

GENERAL INFORMATION

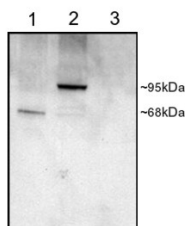
Product Type	Primary antibodies
Short Description	Goat polyclonal antibody anti-PDE4D (C-Term) is suitable for use in ELISA, Western Blot, Immunohistochemistry and EIA research applications.
Applications	Pep-ELISA/WB-Trf/IHC/EIA
Host/Source	Goat
Reactivity	Human

PRODUCT PROPERTIES

Clonality	Polyclonal
Clone ID	
Concentration	0.5 mg/mL
Conjugation	Unconjugated
Purification	Purified from goat serum by ammonium sulphate precipitation followed by antigen affinity chromatography using the immunizing peptide.
Dilution Range	Peptide ELISA: antibody detection limit dilution 1:128000. WB: Approx 70+80+90kDa bands observed in lysates of cell line A549. In transfected COS1 transiently expressing PDE4D1 and PDE4D3 bands of approx. 68kDa and 95kDa are observed. These bands
Formulation	0.5 mg/ml in Tris saline, 0.02% sodium azide, pH7.3 with 0.5% bovine serum albumin. NA
Isotype	IgG
Storage Instruction	Store at -20°C on receipt and minimise freeze-thaw cycles.

TARGET INFORMATION

Gene ID	5144
Gene Symbol	PDE4D
Uniprot ID	PDE4D_HUMAN
Immunogen	
Immunogen Region	C-Term
Specificity	This antibody is expected to recognize all reported isoforms.
Immunogen Sequence	QPEACVIDDRSPDT



STJ70831 staining (1Åug/ml) of COS cell lysates (25Åug protein) : transfected with Human PDE4D1 (1) , transfected with Human PDE4D3 (2) , untransfected (3). Primary incubation was 1 hour. Detected by chemiluminescence.

This product is suitable for in-vitro studies under the RESEARCH USE ONLY [RUO] licence. This product must not be used as for diagnostic or other medical purposes.
St John's Laboratory Ltd, Knowledge Dock Business Centre, University Way, London, E16 2RD | Tel: 0208 223 3081