

## Anti-FOXC1 antibody (Internal) (STJ70827)

STJ70827

### GENERAL INFORMATION

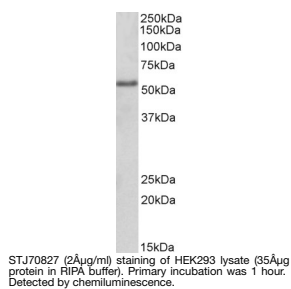
|                          |   |
|--------------------------|---|
| <b>Product Type</b>      | Primary antibodies  |
| <b>Short Description</b> | Goat polyclonal antibody anti-FOXC1 (Internal) is suitable for use in ELISA and Western Blot research applications. |
| <b>Applications</b>      | Pep-ELISA/WB  |
| <b>Host/Source</b>       | Goat  |
| <b>Reactivity</b>        | Human/Mouse/Pig   |

### PRODUCT PROPERTIES

|                       |   |
|-----------------------|---|
| <b>Clonality</b>      | Polyclonal  |
| <b>Clone ID</b>       |   |
| <b>Concentration</b>  | 0.5 mg/mL   |
| <b>Conjugation</b>    | Unconjugated  |
| <b>Purification</b>   | Purified from goat serum by ammonium sulphate precipitation followed by antigen affinity chromatography using the immunizing peptide.   |
| <b>Dilution Range</b> | Peptide ELISA: antibody detection limit dilution 1:32000.<br>WB: Approx 55kDa band observed in lysates of cell line HEK293 (calculated MW of 56.8kDa according to NP_001444.2).<br>Recommended concentration: 2-4µg/ml. |
| <b>Formulation</b>    | 0.5 mg/ml in Tris saline, 0.02% sodium azide, pH7.3 with 0.5% bovine serum albumin. NA  |
| <b>Isotype</b>        | IgG   |
| <b>Storage</b>        | Store at -20°C on receipt and minimise freeze-thaw cycles.  |
| <b>Instruction</b>    |   |

### TARGET INFORMATION

|                           |               |
|---------------------------|---------------|
| <b>Gene ID</b>            | 2296          |
| <b>Gene Symbol</b>        | FOXC1         |
| <b>Uniprot ID</b>         | FOXC1_HUMAN   |
| <b>Immunogen</b>          |               |
| <b>Immunogen Region</b>   | Internal      |
| <b>Specificity</b>        |               |
| <b>Immunogen Sequence</b> | DAVKDKEEKDRLH |



This product is suitable for in-vitro studies under the RESEARCH USE ONLY [RUO] licence. This product must not be used as for diagnostic or other medical purposes.  
St John's Laboratory Ltd, Knowledge Dock Business Centre, University Way, London, E16 2RD | Tel: 0208 223 3081