

## Anti-PTCH antibody (C-Term) (STJ70821)

STJ70821

### GENERAL INFORMATION

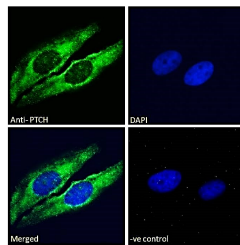
<b>Product Type</b>	Primary antibodies
<b>Short Description</b>	Goat polyclonal antibody anti-PTCH (C-Term) is suitable for use in ELISA, Immunohistochemistry and Immunofluorescence research applications.
<b>Applications</b>	Pep-ELISA/IHC/IF
<b>Host/Source</b>	Goat
<b>Reactivity</b>	Human/Mouse/Rat

### PRODUCT PROPERTIES

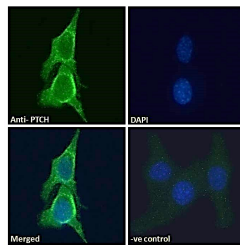
<b>Clonality</b>	Polyclonal
<b>Clone ID</b>	
<b>Concentration</b>	0.5 mg/mL
<b>Conjugation</b>	Unconjugated
<b>Purification</b>	Purified from goat serum by ammonium sulphate precipitation followed by antigen affinity chromatography using the immunizing peptide.
<b>Dilution Range</b>	Peptide ELISA: antibody detection limit dilution 1:16000. IHC: Paraffin embedded Human Brain (Coretx). Recommended concentration: 8µg/ml. IF: Strong expression of the protein seen in the Golgi of HeLa and NIH3T3 cells. Recommended concentration: 0.5 mg/ml in Tris saline, 0.02% sodium azide, pH7.3 with 0.5% bovine serum albumin. NA
<b>Formulation</b>	0.5 mg/ml in Tris saline, 0.02% sodium azide, pH7.3 with 0.5% bovine serum albumin. NA
<b>Isotype</b>	IgG
<b>Storage</b>	Store at -20°C on receipt and minimise freeze-thaw cycles.
<b>Instruction</b>	

### TARGET INFORMATION

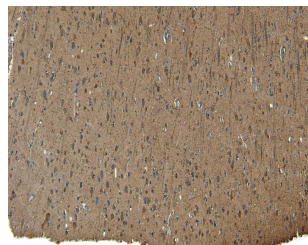
<b>Gene ID</b>	5727
<b>Gene Symbol</b>	PTCH1
<b>Uniprot ID</b>	PTC1_HUMAN
<b>Immunogen</b>	C-Term
<b>Region</b>	
<b>Specificity</b>	This antibody is expected to recognise all reported isoforms. Variants (NP_001077073.1; NP_001077074.1; NP_001077075.1; NP_001077076.1) encode the same isoform.
<b>Immunogen Sequence</b>	ELQDVECEERPR



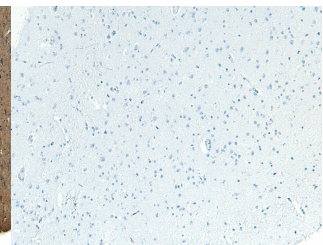
STJ70821 Immunofluorescence analysis of paraformaldehyde fixed HeLa cells, permeabilized with 0.15% Triton. Primary incubation 1hr (10µg/ml) followed by Alexa Fluor 488 secondary antibody (2µg/ml), showing Golgi/cytoplasmic staining. The nuclear stain is DAPI (blue). Negative control: Unimmunized goat IgG (10µg/ml) followed by Alexa Fluor 488 secondary antibody (2µg/ml).



STJ70821 Immunofluorescence analysis of paraformaldehyde fixed NIH3T3 cells, permeabilized with 0.15% Triton. Primary incubation 1hr (10µg/ml) followed by Alexa Fluor 488 secondary antibody (2µg/ml), showing Golgi staining. The nuclear stain is DAPI (blue). NA NA Negative control: Unimmunized goat IgG (10µg/ml) followed by Alexa Fluor 488 secondary antibody (2µg/ml).



STJ70821 (8µg/ml) staining of paraffin embedded Human Cortex. Heat induced antigen retrieval with citrate buffer pH 6, HRP-staining.



STJ70821 Negative Control showing staining of paraffin embedded Human Cortex, with no primary antibody.

This product is suitable for in-vitro studies under the RESEARCH USE ONLY [RUO] licence. This product must not be used as for diagnostic or other medical purposes.  
St John's Laboratory Ltd, Knowledge Dock Business Centre, University Way, London, E16 2RD | Tel: 0208 223 3081