

Anti-MDM2-Isoform antibody (Internal) (STJ70807)

STJ70807

GENERAL INFORMATION

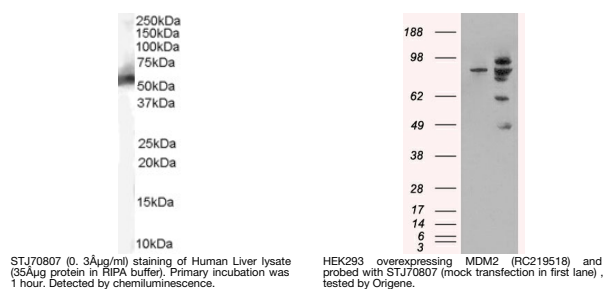
Product Type	Primary antibodies
Short Description	Goat polyclonal antibody anti-MDM2-Isoform (Internal) is suitable for use in ELISA and Western Blot research applications.
Applications	Pep-ELISA/WB
Host/Source	Goat
Reactivity	Human/Rat/Cat/Dog/Pig/Cow

PRODUCT PROPERTIES

Clonality	Polyclonal
Clone ID	
Concentration	0.5 mg/mL
Conjugation	Unconjugated
Purification	Purified from goat serum by ammonium sulphate precipitation followed by antigen affinity chromatography using the immunizing peptide.
Dilution Range	Peptide ELISA: antibody detection limit dilution 1:64000. WB: Approx 55kDa band observed in Human Liver lysates (calculated MW of 56.0kDa according to NP_002383.2). In transfected HEK293 transiently expressing MDM2 bands of approx. 48kDa, 60KDa,
Formulation	0.5 mg/ml in Tris saline, 0.02% sodium azide, pH7.3 with 0.5% bovine serum albumin. NA
Isotype	IgG
Storage Instruction	Store at -20°C on receipt and minimise freeze-thaw cycles.

TARGET INFORMATION

Gene ID	4193
Gene Symbol	MDM2
Uniprot ID	MDM2_HUMAN
Immunogen	
Immunogen Region	Internal
Specificity	This antibody is expected to recognize isoform MDM2 (NP_002383.2) only.
Immunogen Sequence	DELSGERQKRHKSD



This product is suitable for in-vitro studies under the RESEARCH USE ONLY [RUO] licence. This product must not be used as for diagnostic or other medical purposes.
St John's Laboratory Ltd, Knowledge Dock Business Centre, University Way, London, E16 2RD | Tel: 0208 223 3081