

Anti-NHERF2-Isoform a antibody (Internal) (STJ70795)

STJ70795

GENERAL INFORMATION

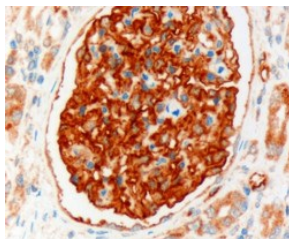
Product Type	Primary antibodies
Short Description	Goat polyclonal antibody anti-NHERF2-Isoform a (Internal) is suitable for use in ELISA, Western Blot and Immunohistochemistry research applications.
Applications	Pep-ELISA/WB/IHC
Host/Source	Goat
Reactivity	Human

PRODUCT PROPERTIES

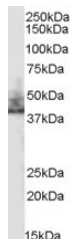
Clonality	Polyclonal
Clone ID	
Concentration	0.5 mg/mL
Conjugation	Unconjugated
Purification	Purified from goat serum by ammonium sulphate precipitation followed by antigen affinity chromatography using the immunizing peptide.
Dilution Range	Peptide ELISA: antibody detection limit dilution 1:32000. WB: Approx 38kDa band observed in human kidney lysates (calculated MW of 37.4kDa according to BAA33216.1). Recommended concentration: 0.3-1µg/ml. IHC: In paraffin embedded Human Kidney
Formulation	0.5 mg/ml in Tris saline, 0.02% sodium azide, pH7.3 with 0.5% bovine serum albumin. NA
Isotype	IgG
Storage	Store at -20°C on receipt and minimise freeze-thaw cycles.
Instruction	

TARGET INFORMATION

Gene ID	9351
Gene Symbol	NHERF2
Uniprot ID	NHRF2_HUMAN
Immunogen	
Immunogen Region	Internal
Specificity	Please note that this variant has an extra insertion of 11 residues compared to NP_004776.3. The immunizing peptide represents this insertion.
Immunogen Sequence	DGSAWKQDPFQ



STJ70795 (3Åug/ml) staining of paraffin embedded Human Kidney. Microwaved antigen retrieval with Tris/EDTA buffer pH9, HRP-staining.



STJ70795 (0.3Åug/ml) staining of human kidney lysate (35Åug protein in RIPA buffer). Primary incubation was 1 hour. Detected by chemiluminescence.

This product is suitable for in-vitro studies under the RESEARCH USE ONLY [RUO] licence. This product must not be used as for diagnostic or other medical purposes.
St John's Laboratory Ltd, Knowledge Dock Business Centre, University Way, London, E16 2RD | Tel: 0208 223 3081