

Anti-CBX3/HP1 Gamma antibody (Internal) (STJ70791)

STJ70791

GENERAL INFORMATION

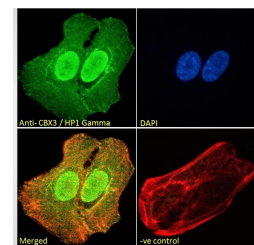
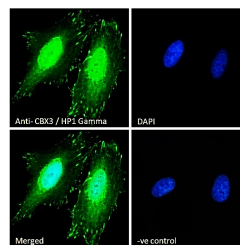
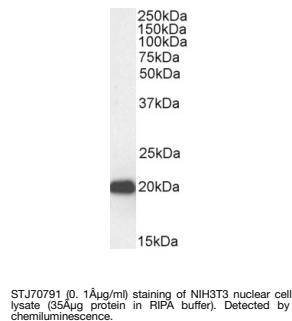
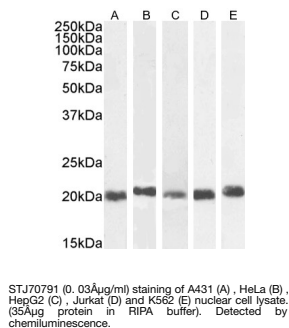
Product Type	Primary antibodies
Short Description	Goat polyclonal antibody anti-CBX3/HP1 Gamma (Internal) is suitable for use in ELISA, Western Blot, Immunohistochemistry, Immunofluorescence and Flow Cytometry research applications.
Applications	Pep-ELISA/WB/IHC/IF/FC
Host/Source	Goat
Reactivity	Human/Mouse/Rat/Cow/Dog

PRODUCT PROPERTIES

Clonality	Polyclonal
Clone ID	
Concentration	0.5 mg/mL
Conjugation	Unconjugated
Purification	Purified from goat serum by ammonium sulphate precipitation followed by antigen affinity chromatography using the immunizing peptide.
Dilution Range	Peptide ELISA: antibody detection limit dilution 1:32000. WB: Approx. 20kDa band observed in lysates of cell lines A431, HeLa, HepG2, NIH3T3 and NSO (calculated MW of 20.8kDa according to NP_009207.2 and NP_057671.2). Recommended concentration: 0
Formulation	0.5 mg/ml in Tris saline, 0.02% sodium azide, pH7.3 with 0.5% bovine serum albumin. NA
Isotype	IgG
Storage Instruction	Store at -20°C on receipt and minimise freeze-thaw cycles.

TARGET INFORMATION

Gene ID	11335
Gene Symbol	CBX3
Uniprot ID	CBX3_HUMAN
Immunogen	
Immunogen Region	Internal
Specificity	No cross-reactivity expected with HP1-alpha and HP1-beta. Reported variants represent identical protein: NP_009207.2, NP_057671.2
Immunogen Sequence	EAFLNSQKAGKEKD



This product is suitable for in-vitro studies under the RESEARCH USE ONLY [RUO] licence. This product must not be used as for diagnostic or other medical purposes.
St John's Laboratory Ltd, Knowledge Dock Business Centre, University Way, London, E16 2RD | Tel: 0208 223 3081