

Anti-PCK2/PEPCK-M antibody (Internal) (STJ70781)

STJ70781

GENERAL INFORMATION

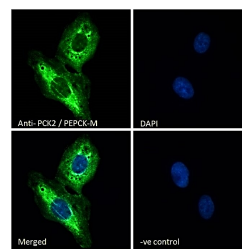
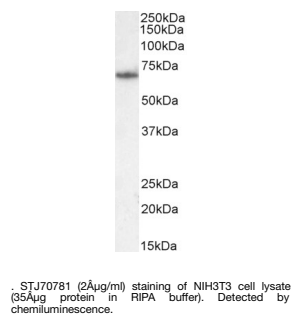
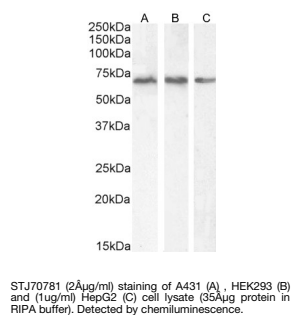
Product Type	Primary antibodies
Short Description	Goat polyclonal antibody anti-PCK2/PEPCK-M (Internal) is suitable for use in ELISA, Western Blot, Immunofluorescence and Flow Cytometry research applications.
Applications	Pep-ELISA/WB/IF/FC
Host/Source	Goat
Reactivity	Human/Mouse/Rat/Dog/Pig/Cow

PRODUCT PROPERTIES

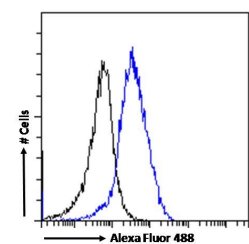
Clonality	Polyclonal
Clone ID	
Concentration	0.5 mg/mL
Conjugation	Unconjugated
Purification	Purified from goat serum by ammonium sulphate precipitation followed by antigen affinity chromatography using the immunizing peptide.
Dilution Range	Peptide ELISA: antibody detection limit dilution 1:4000. WB: Approx 70kDa band observed in lysates of cell lines A431, HEK293 HepG2 and NIH3T3 (calculated MW of 70.7kDa according to Human NP_004554.3 and 70.5kDa according to Mouse NP_083270.2). R
Formulation	0.5 mg/ml in Tris saline, 0.02% sodium azide, pH7.3 with 0.5% bovine serum albumin. NA
Isotype	IgG
Storage Instruction	Store at -20°C on receipt and minimise freeze-thaw cycles.

TARGET INFORMATION

Gene ID	5106
Gene Symbol	PCK2
Uniprot ID	PCKGM_HUMAN
Immunogen	
Immunogen Region	Internal
Specificity	No cross-reactivity with PCK1.
Immunogen Sequence	KPWKPGDKEPCAH



STJ70781 Immunofluorescence analysis of paraformaldehyde fixed U2OS cells, permeabilized with 0.15% Triton. Primary incubation 1hr (10µg/ml) followed by Alexa Fluor 488 secondary antibody (2µg/ml), showing cytoplasmic staining. The nuclear stain is DAPI (blue). Negative control: Unimmunized goat IgG (10µg/ml) followed by Alexa Fluor 488 secondary antibody (2µg/ml).



STJ70781 Flow cytometric analysis of paraformaldehyde fixed MCF7 cells (blue line), permeabilized with 0.5% Triton. Primary incubation 1hr (10µg/ml) followed by Alexa Fluor 488 secondary antibody (1µg/ml). IgG control: Unimmunized goat IgG (black line) followed by Alexa Fluor 488 secondary antibody.

This product is suitable for in-vitro studies under the RESEARCH USE ONLY [RUO] licence. This product must not be used as for diagnostic or other medical purposes.
St John's Laboratory Ltd, Knowledge Dock Business Centre, University Way, London, E16 2RD | Tel: 0208 223 3081