

## Anti-GDF15 antibody (C-Term) (STJ70767)

STJ70767

### GENERAL INFORMATION

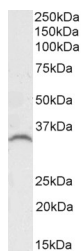
<b>Product Type</b>	Primary antibodies
<b>Short Description</b>	Goat polyclonal antibody anti-GDF15 (C-Term) is suitable for use in ELISA, Western Blot, Immunohistochemistry and Flow Cytometry research applications.
<b>Applications</b>	Pep-ELISA/WB/IHC/FC
<b>Host/Source</b>	Goat
<b>Reactivity</b>	Human

### PRODUCT PROPERTIES

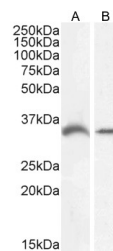
<b>Clonality</b>	Polyclonal
<b>Clone ID</b>	
<b>Concentration</b>	0.5 mg/mL
<b>Conjugation</b>	Unconjugated
<b>Purification</b>	Purified from goat serum by ammonium sulphate precipitation followed by antigen affinity chromatography using the immunizing peptide.
<b>Dilution Range</b>	Peptide ELISA: antibody detection limit dilution 1:128000. WB: Approx 35kDa band observed in Human Prostate lysates and in lysates of cell lines A549, CaCo-2 and LNCaP (calculated MW of 34.1kDa according to NP_004855.2). An additional band was seen at approx 37kDa.
<b>Formulation</b>	0.5 mg/ml in Tris saline, 0.02% sodium azide, pH7.3 with 0.5% bovine serum albumin. NA
<b>Isotype</b>	IgG
<b>Storage Instruction</b>	Store at -20°C on receipt and minimise freeze-thaw cycles.

### TARGET INFORMATION

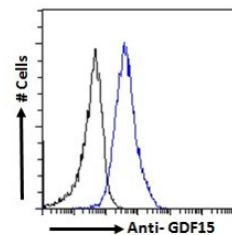
<b>Gene ID</b>	9518
<b>Gene Symbol</b>	GDF15
<b>Uniprot ID</b>	GDF15_HUMAN
<b>Immunogen</b>	
<b>Immunogen Region</b>	C-Term
<b>Specificity</b>	
<b>Immunogen Sequence</b>	QKTDGTGVSLSQTYDD



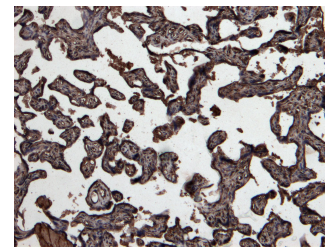
STJ70767 (0.1Åug/ml) staining of Human Prostate lysate (35Åug protein in RIPA buffer). Detected by chemiluminescence.



STJ70767 (0.1Åug/ml) staining of LNCaP (A) and (0.3Åug/ml) K562 (B) cell lysate (35Åug protein in RIPA buffer). Detected by chemiluminescence.



STJ70767 Flow cytometric analysis of paraformaldehyde fixed HeLa cells (blue line) permeabilized with 0.5% Triton. Primary incubation 1hr (10Åug/ml) followed by Alexa Fluor 488 secondary antibody (1Åug/ml). IgG control: Unimmunized goat IgG (black line) followed by Alexa Fluor 488 secondary antibody.



STJ70767 (7Åug/ml) staining of paraffin embedded Human Placenta. Heat induced antigen retrieval with citrate buffer pH 6, HRP-staining.

This product is suitable for in-vitro studies under the RESEARCH USE ONLY [RUO] licence. This product must not be used as for diagnostic or other medical purposes.  
St John's Laboratory Ltd, Knowledge Dock Business Centre, University Way, London, E16 2RD | Tel: 0208 223 3081