

Anti-CFC1/Cripto-1 antibody (Internal) (STJ70759)

STJ70759

GENERAL INFORMATION

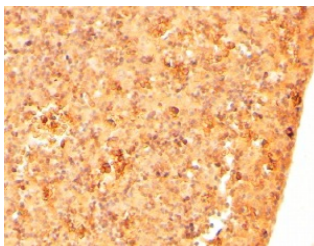
Product Type	Primary antibodies
Short Description	Goat polyclonal antibody anti-CFC1/Cripto-1 (Internal) is suitable for use in ELISA and Immunohistochemistry research applications.
Applications	Pep-ELISA/IHC
Host/Source	Goat
Reactivity	Human/Mouse/Rat

PRODUCT PROPERTIES

Clonality	Polyclonal
Clone ID	
Concentration	0.5 mg/mL
Conjugation	Unconjugated
Purification	Purified from goat serum by ammonium sulphate precipitation followed by antigen affinity chromatography using the immunizing peptide.
Dilution Range	Peptide ELISA: antibody detection limit dilution 1:32000. WB: Preliminary experiments gave an approx 55kDa band in Human Breast, Placenta and Testis lysates after 0.1 µg/ml antibody staining. Please note that currently we cannot find an explanation.
Formulation	0.5 mg/ml in Tris saline, 0.02% sodium azide, pH7.3 with 0.5% bovine serum albumin. NA
Isotype	IgG
Storage Instruction	Store at -20°C on receipt and minimise freeze-thaw cycles.

TARGET INFORMATION

Gene ID	55997
Gene Symbol	CFC1
Uniprot ID	CFC1_HUMAN
Immunogen	
Immunogen Region	Internal
Specificity	
Immunogen Sequence	HFTGRYCEHDQRRSEC



STJ70759 (2 µg/ml) staining of paraffin embedded Mouse Embryo Liver. Steamed antigen retrieval with citrate buffer pH 6, HRP-staining.

This product is suitable for in-vitro studies under the RESEARCH USE ONLY [RUO] licence. This product must not be used as for diagnostic or other medical purposes.
St John's Laboratory Ltd, Knowledge Dock Business Centre, University Way, London, E16 2RD | Tel: 0208 223 3081