

## Anti-Cofilin 2 antibody (C-Term) (STJ70757)

STJ70757

### GENERAL INFORMATION

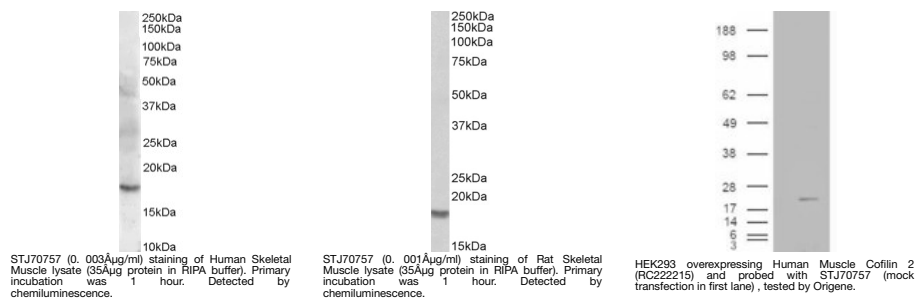
<b>Product Type</b>	Primary antibodies
<b>Short Description</b>	Goat polyclonal antibody anti-Cofilin 2 (C-Term) is suitable for use in ELISA, Western Blot and Immunohistochemistry research applications.
<b>Applications</b>	Pep-ELISA/WB/IHC
<b>Host/Source</b>	Goat
<b>Reactivity</b>	Human/Mouse/Rat/Dog/Pig

### PRODUCT PROPERTIES

<b>Clonality</b>	Polyclonal
<b>Clone ID</b>	
<b>Concentration</b>	0.5 mg/mL
<b>Conjugation</b>	Unconjugated
<b>Purification</b>	Purified from goat serum by ammonium sulphate precipitation followed by antigen affinity chromatography using the immunizing peptide.
<b>Dilution Range</b>	Peptide ELISA: antibody detection limit dilution 1:128000. WB: Approx 18kDa band observed in Human Skeletal Muscle lysates and in Rat Heart lysates (calculated MW of 18.7kDa according to NP_068733.1 and NP_619579.1). Recommended concentration: 0.0
<b>Formulation</b>	0.5 mg/ml in Tris saline, 0.02% sodium azide, pH7.3 with 0.5% bovine serum albumin. NA
<b>Isotype</b>	IgG
<b>Storage Instruction</b>	Store at -20°C on receipt and minimise freeze-thaw cycles.

### TARGET INFORMATION

<b>Gene ID</b>	1073
<b>Gene Symbol</b>	CFL2
<b>Uniprot ID</b>	COF2_HUMAN
<b>Immunogen</b>	
<b>Immunogen Region</b>	C-Term
<b>Specificity</b>	This antibody is expected to recognise both reported isoforms (NP_068733 and NP_619579)
<b>Immunogen Sequence</b>	DIKDRSTLGEK



This product is suitable for in-vitro studies under the RESEARCH USE ONLY [RUO] licence. This product must not be used as for diagnostic or other medical purposes.  
St John's Laboratory Ltd, Knowledge Dock Business Centre, University Way, London, E16 2RD | Tel: 0208 223 3081