

Anti-RAE1 antibody (C-Term) (STJ70738)

STJ70738

GENERAL INFORMATION

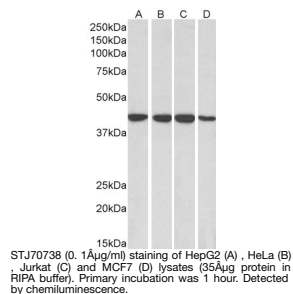
Product Type	Primary antibodies
Short Description	Goat polyclonal antibody anti-RAE1 (C-Term) is suitable for use in ELISA, Western Blot and Immunohistochemistry research applications.
Applications	Pep-ELISA/WB/IHC
Host/Source	Goat
Reactivity	Human/Mouse/Rat/Pig/Dog/Cow

PRODUCT PROPERTIES

Clonality	Polyclonal
Clone ID	
Concentration	0.5 mg/mL
Conjugation	Unconjugated
Purification	Purified from goat serum by ammonium sulphate precipitation followed by antigen affinity chromatography using the immunizing peptide.
Dilution Range	Peptide ELISA: antibody detection limit dilution 1:64000. WB: Approx 40kDa band observed in lysates cell lines HepG2, HeLa, Jurkat and MCF7 (calculated MW of 41.0kDa according to NP_003601.1). Recommended concentration: 0.1-0.3µg/ml. IHC: In
Formulation	0.5 mg/ml in Tris saline, 0.02% sodium azide, pH7.3 with 0.5% bovine serum albumin. NA
Isotype	IgG
Storage	Store at -20°C on receipt and minimise freeze-thaw cycles.
Instruction	

TARGET INFORMATION

Gene ID	8480
Gene Symbol	RAE1
Uniprot ID	RAE1L_HUMAN
Immunogen	
Immunogen Region	C-Term
Specificity	NP_003601 and NP_001015885 represent identical proteins.
Immunogen Sequence	NAAEELKPRNKK



This product is suitable for in-vitro studies under the RESEARCH USE ONLY [RUO] licence. This product must not be used as for diagnostic or other medical purposes.
St John's Laboratory Ltd, Knowledge Dock Business Centre, University Way, London, E16 2RD | Tel: 0208 223 3081