

Anti-SP1 antibody (Internal) (STJ70737)

STJ70737

GENERAL INFORMATION

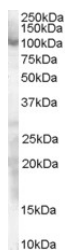
Product Type	Primary antibodies
Short Description	Goat polyclonal antibody anti-SP1 (Internal) is suitable for use in ELISA and Western Blot research applications.
Applications	Pep-ELISA/WB
Host/Source	Goat
Reactivity	Human/Mouse/Rat/Dog/Pig/Cow

PRODUCT PROPERTIES

Clonality	Polyclonal
Clone ID	
Concentration	0.5 mg/mL
Conjugation	Unconjugated
Purification	Purified from goat serum by ammonium sulphate precipitation followed by antigen affinity chromatography using the immunizing peptide.
Dilution Range	Peptide ELISA: antibody detection limit dilution 1:16000. WB: Approx 100kDa band observed in lysates of cell lines HeLa (calculated MW of 80.7kDa according to NP_612482.2). Recommended concentration: 0.3-1µg/ml. Primary incubated for 1 hour.
Formulation	0.5 mg/ml in Tris saline, 0.02% sodium azide, pH7.3 with 0.5% bovine serum albumin. NA
Isotype	IgG
Storage Instruction	Store at -20°C on receipt and minimise freeze-thaw cycles.

TARGET INFORMATION

Gene ID	6667
Gene Symbol	SP1
Uniprot ID	SP1_HUMAN
Immunogen	
Immunogen Region	Internal
Specificity	This antibody is expected to recognise both reported isoforms (NP_612482.2; NP_003100.1).
Immunogen Sequence	CSRIESPNENSNSQ



STJ70737 staining (0.3 µg/ml) of HeLa lysate (RIPA buffer, 30 µg total protein per lane). Detected by chemiluminescence.