

Anti-Caveolin 1 antibody (Internal) (STJ70728)

STJ70728

GENERAL INFORMATION

Product Type	Primary antibodies
Short Description	Goat polyclonal antibody anti-Caveolin 1 (Internal) is suitable for use in ELISA, Western Blot, Immunofluorescence, Immunohistochemistry and Flow Cytometry research applications.
Applications	Pep-ELISA/WB/IF/IHC/FC
Host/Source	Goat
Reactivity	Human/Mouse/Rat/Dog/Pig

PRODUCT PROPERTIES

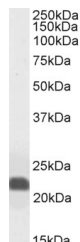
Clonality	Polyclonal
Clone ID	
Concentration	0.5 mg/mL
Conjugation	Unconjugated
Purification	Purified from goat serum by ammonium sulphate precipitation followed by antigen affinity chromatography using the immunizing peptide.
Dilution Range	Peptide ELISA: antibody detection limit dilution 1:8000. WB: Approx 22kDa band observed in lysates of cell lines A431 and A549 and in Human Heart lysates (calculated MW of 20.5kDa according to NP_001744.2). Recommended concentration: 0.001-0.01µg
Formulation	0.5 mg/ml in Tris saline, 0.02% sodium azide, pH7.3 with 0.5% bovine serum albumin. NA
Isotype	IgG
Storage Instruction	Store at -20°C on receipt and minimise freeze-thaw cycles.

TARGET INFORMATION

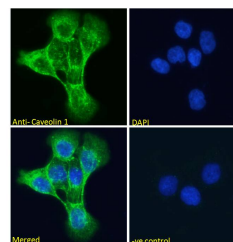
Gene ID	857
Gene Symbol	CAV1
Uniprot ID	CAV1_HUMAN
Immunogen	
Immunogen Region	Internal
Specificity	This antibody is expected to recognize both reported isoforms (NP_001744.2; NP_001166366.1). Reported variants represent identical protein: NP_001166367.1, NP_001166368.1, NP_001166366.1. No cross-reactivity expected to Caveolin 2 and Caveolin 3
Immunogen Sequence	DELSEKQVYDAH



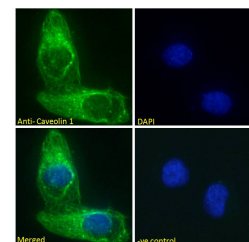
STJ70728 (0.003µg/ml) staining of A431 (A) and (0.001µg/ml) A549 cell lysate (35µg protein in RIPA buffer). Detected by chemiluminescence.



STJ70728 (0.003µg/ml) staining of Human Heart lysate (35µg protein in RIPA buffer). Detected by chemiluminescence.



STJ70728 Immunofluorescence analysis of paraformaldehyde fixed A431 cells, permeabilized with 0.15% Triton. Primary incubation 1hr (10µg/ml) followed by Alexa Fluor 488 secondary antibody (2µg/ml), showing Golgi and membrane staining. The nuclear stain is DAPI (blue). Negative control: Unimmunized goat IgG (10µg/ml) followed by Alexa Fluor 488 secondary antibody (2µg/ml).



STJ70728 Immunofluorescence analysis of paraformaldehyde fixed U2OS cells, permeabilized with 0.15% Triton. Primary incubation 1hr (10µg/ml) followed by Alexa Fluor 488 secondary antibody (2µg/ml), showing Golgi and cytoplasmic staining. The nuclear stain is DAPI (blue). Negative control: Unimmunized goat IgG (10µg/ml) followed by Alexa Fluor 488 secondary antibody (2µg/ml).

This product is suitable for in-vitro studies under the RESEARCH USE ONLY [RUO] licence. This product must not be used as for diagnostic or other medical purposes.
St John's Laboratory Ltd, Knowledge Dock Business Centre, University Way, London, E16 2RD | Tel: 0208 223 3081