

Anti-GST3/GSTP1 antibody (Internal) (STJ70722)

STJ70722

GENERAL INFORMATION

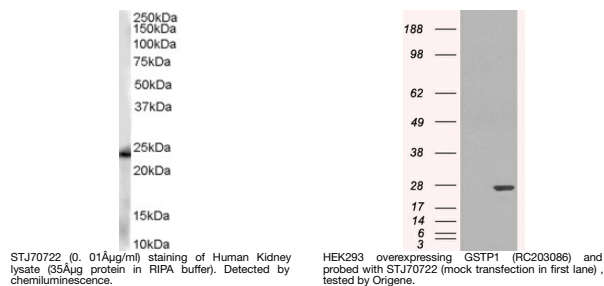
Product Type	Primary antibodies
Short Description	Goat polyclonal antibody anti-GST3/GSTP1 (Internal) is suitable for use in ELISA, Western Blot, Immunohistochemistry, Immunofluorescence and Flow Cytometry research applications.
Applications	Pep-ELISA/WB/IHC/IF/FC
Host/Source	Goat
Reactivity	Human/Mouse/Rat/Dog/Cow

PRODUCT PROPERTIES

Clonality	Polyclonal
Clone ID	
Concentration	0.5 mg/mL
Conjugation	Unconjugated
Purification	Purified from goat serum by ammonium sulphate precipitation followed by antigen affinity chromatography using the immunizing peptide.
Dilution Range	Peptide ELISA: antibody detection limit dilution 1:32000. WB: Approx 25kDa band observed in Human Kidney, Lung and Thymus lysates, lysates of cell lines HeLa, HEK293, Jurkat, CaCo-2, K562, NIH3T3, KNRK and MDCK, and, in nuclear lysates of cell li
Formulation	0.5 mg/ml in Tris saline, 0.02% sodium azide, pH7.3 with 0.5% bovine serum albumin. NA
Isotype	IgG
Storage Instruction	Store at -20°C on receipt and minimise freeze-thaw cycles.

TARGET INFORMATION

Gene ID	2950
Gene Symbol	GSTP1
Uniprot ID	GSTP1_HUMAN
Immunogen	
Immunogen Region	Internal
Specificity	
Immunogen Sequence	LADQQGSWKEEV



This product is suitable for in-vitro studies under the RESEARCH USE ONLY [RUO] licence. This product must not be used as for diagnostic or other medical purposes.
St John's Laboratory Ltd, Knowledge Dock Business Centre, University Way, London, E16 2RD | Tel: 0208 223 3081