

Anti-Aminopeptidase A antibody (Internal) (STJ70720)

STJ70720

GENERAL INFORMATION

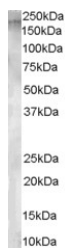
Product Type	Primary antibodies
Short Description	Goat polyclonal antibody anti-Aminopeptidase A (Internal) is suitable for use in ELISA, Western Blot and Immunohistochemistry research applications.
Applications	Pep-ELISA/WB/IHC
Host/Source	Goat
Reactivity	Human/Mouse/Rat/Dog/Pig/Cow

PRODUCT PROPERTIES

Clonality	Polyclonal
Clone ID	
Concentration	0.5 mg/mL
Conjugation	Unconjugated
Purification	Purified from goat serum by ammonium sulphate precipitation followed by antigen affinity chromatography using the immunizing peptide.
Dilution Range	Peptide ELISA: antibody detection limit dilution 1:64000. WB: Approx 170kDa band observed in Human Brain and Testis lysates (calculated MW of 109kDa according to NP_001968.2). Primary incubation was for 1 hour. The observed molecular weight corresponds
Formulation	0.5 mg/ml in Tris saline, 0.02% sodium azide, pH7.3 with 0.5% bovine serum albumin. NA
Isotype	IgG
Storage Instruction	Store at -20°C on receipt and minimise freeze-thaw cycles.

TARGET INFORMATION

Gene ID	2028
Gene Symbol	ENPEP
Uniprot ID	AMPE_HUMAN
Immunogen	
Immunogen Region	Internal
Specificity	
Immunogen Sequence	EQYQKTSLAQEKEK



STJ70720 staining (1 µg/ml) of Human Testis lysate (RIPA buffer, 30 µg total protein per lane). Detected by chemiluminescence.