

Anti-CD32/FCGR2B antibody (C-Term) (STJ70681)

STJ70681

GENERAL INFORMATION

Product Type	Primary antibodies
Short Description	Goat polyclonal antibody anti-CD32/FCGR2B (C-Term) is suitable for use in ELISA, Western Blot, Flow Cytometry, Immunofluorescence and Immunohistochemistry research applications.
Applications	Pep-ELISA/WB/FC/IF/IHC
Host/Source	Goat
Reactivity	Human

PRODUCT PROPERTIES

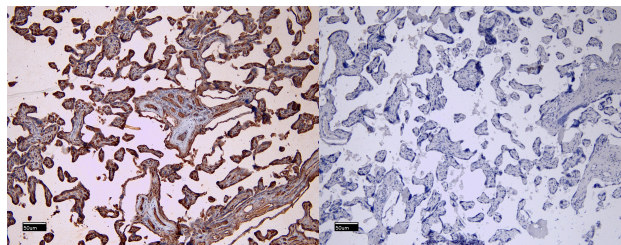
Clonality	Polyclonal
Clone ID	
Concentration	0.5 mg/mL
Conjugation	Unconjugated
Purification	Purified from goat serum by ammonium sulphate precipitation followed by antigen affinity chromatography using the immunizing peptide.
Dilution Range	Peptide ELISA: antibody detection limit dilution 1:32000. WB: Approx. 38kDa band observed in Human Placenta lysates and in lysates of cell line Daudi, and also in preliminary testing of K562 cell lysate (calculated MW of 34.0kDa according to NP_0
Formulation	0.5 mg/ml in Tris saline, 0.02% sodium azide, pH7.3 with 0.5% bovine serum albumin. NA
Isotype	IgG
Storage	Store at -20°C on receipt and minimise freeze-thaw cycles.
Instruction	

TARGET INFORMATION

Gene ID	2213
Gene Symbol	FCGR2B
Uniprot ID	FCG2B_HUMAN
Immunogen	
Immunogen Region	C-Term
Specificity	This antibody is expected to recognise all reported isoforms (NP_001002273.1; NP_001002274.1; NP_001002275.1; NP_003992.3; NP_001177757.1).
Immunogen Sequence	PDALPEPDDQNRI

250kDa
150kDa
100kDa
75kDa
50kDa
37kDa
25kDa
20kDa
15kDa

STJ70681 (1Aug/ml) staining of Daudi cell lysate (RIPA buffer, (35Aug protein in RIPA buffer). Detected by chemiluminescence.



STJ70681 (8Aug/ml) staining of paraffin-embedded Human Placenta. Heat induced antigen retrieval with citrate buffer pH 6, HRP-staining.

STJ70681 Negative Control showing staining of paraffin-embedded Human Placenta, with no primary antibody.

This product is suitable for in-vitro studies under the RESEARCH USE ONLY [RUO] licence. This product must not be used as for diagnostic or other medical purposes.
St John's Laboratory Ltd, Knowledge Dock Business Centre, University Way, London, E16 2RD | Tel: 0208 223 3081