

## Anti-Neuroserpin antibody (C-Term) (STJ70678)

STJ70678

### GENERAL INFORMATION

<b>Product Type</b>	Primary antibodies
<b>Short Description</b>	Goat polyclonal antibody anti-Neuroserpin (C-Term) is suitable for use in ELISA, Western Blot, Immunohistochemistry and Flow Cytometry research applications.
<b>Applications</b>	Pep-ELISA/WB/IHC/FC
<b>Host/Source</b>	Goat
<b>Reactivity</b>	Human/Mouse/Rat/Pig/Cow

### PRODUCT PROPERTIES

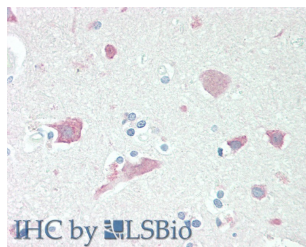
<b>Clonality</b>	Polyclonal
<b>Clone ID</b>	
<b>Concentration</b>	0.5 mg/mL
<b>Conjugation</b>	Unconjugated
<b>Purification</b>	Purified from goat serum by ammonium sulphate precipitation followed by antigen affinity chromatography using the immunizing peptide.
<b>Dilution Range</b>	Peptide ELISA: antibody detection limit dilution 1:32000. WB: Approx 48kDa band observed in lysates of cell lines Kelly and K562 and in Human Placenta and Mouse and Rat Brain lysates (calculated MW of 46.4kDa according to Human NP_005016.1, Mouse
<b>Formulation</b>	0.5 mg/ml in Tris saline, 0.02% sodium azide, pH7.3 with 0.5% bovine serum albumin. NA
<b>Isotype</b>	IgG
<b>Storage Instruction</b>	Store at -20°C on receipt and minimise freeze-thaw cycles.

### TARGET INFORMATION

<b>Gene ID</b>	5274
<b>Gene Symbol</b>	SERPIN1
<b>Uniprot ID</b>	NEUS_HUMAN
<b>Immunogen</b>	
<b>Immunogen Region</b>	C-Term
<b>Specificity</b>	Reported variants represent identical protein (NP_005016.1; NP_001116224.1).
<b>Immunogen Sequence</b>	TMNTSGHDFEEL

250kDa  
150kDa  
100kDa  
75kDa  
50kDa  
37kDa  
25kDa  
20kDa  
15kDa  
10kDa

STJ70678 (1Åg/ml) staining of Human Brain lysate (35Åg protein in RIPA buffer). Detected by chemiluminescence.



STJ70678 (5Åg/ml) staining of paraffin embedded Human Cortex. Steamed antigen retrieval with citrate buffer pH 6, AP-staining.

This product is suitable for in-vitro studies under the RESEARCH USE ONLY [RUO] licence. This product must not be used as for diagnostic or other medical purposes.  
St John's Laboratory Ltd, Knowledge Dock Business Centre, University Way, London, E16 2RD | Tel: 0208 223 3081