

Anti-Triosephosphate isomerase antibody (C-Term) (STJ70655)

STJ70655

GENERAL INFORMATION

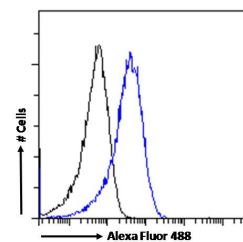
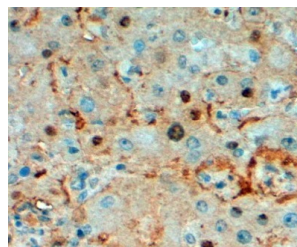
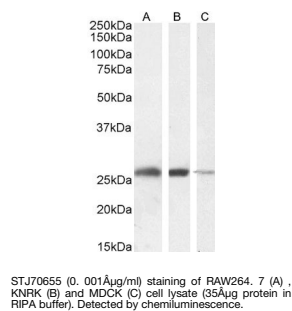
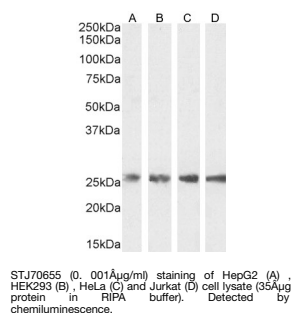
Product Type	Primary antibodies
Short Description	Goat polyclonal antibody anti-Triosephosphate isomerase (C-Term) is suitable for use in ELISA, Western Blot, Immunohistochemistry and Flow Cytometry research applications.
Applications	Pep-ELISA/WB/IHC/FC
Host/Source	Goat
Reactivity	Human/Mouse/Rat/Dog/Cow

PRODUCT PROPERTIES

Clonality	Polyclonal
Clone ID	
Concentration	0.5 mg/mL
Conjugation	Unconjugated
Purification	Purified from goat serum by ammonium sulphate precipitation followed by antigen affinity chromatography using the immunizing peptide.
Dilution Range	Peptide ELISA: antibody detection limit dilution 1:16000. WB: Approx 26kDa band observed in lysates of cell lines HEK293, HeLa, HepG2, Jurkat, Raw264.7. KNRK and MDCK (calculated MW of 26.7kDa according to Human NP_000356.1). Recommended concentr of 26.7kDa according to Human NP_000356.1). Recommended concentr
Formulation	0.5 mg/ml in Tris saline, 0.02% sodium azide, pH7.3 with 0.5% bovine serum albumin. NA
Isotype	IgG
Storage Instruction	Store at -20°C on receipt and minimise freeze-thaw cycles.

TARGET INFORMATION

Gene ID	7167
Gene Symbol	TPH1
Uniprot ID	TPIS_HUMAN
Immunogen	
Immunogen Region	C-Term
Specificity	This antibody is expected to recognise reported isoforms 1 and 2 (NP_000356.1; NP_001152759.1).
Immunogen Sequence	LKPEFVDIIINAKQ



This product is suitable for in-vitro studies under the RESEARCH USE ONLY [RUO] licence. This product must not be used as for diagnostic or other medical purposes.
St John's Laboratory Ltd, Knowledge Dock Business Centre, University Way, London, E16 2RD | Tel: 0208 223 3081