

## Anti-COMT antibody (N-Term) (STJ70636)

STJ70636

### GENERAL INFORMATION

<b>Product Type</b>	Primary antibodies
<b>Short Description</b>	Goat polyclonal antibody anti-COMT (N-Term) is suitable for use in ELISA, Western Blot and Flow Cytometry research applications.
<b>Applications</b>	Pep-ELISA/WB/FC
<b>Host/Source</b>	Goat
<b>Reactivity</b>	Human/Dog

### PRODUCT PROPERTIES

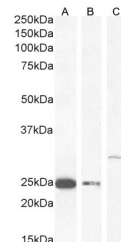
<b>Clonality</b>	Polyclonal
<b>Clone ID</b>	
<b>Concentration</b>	0.5 mg/mL
<b>Conjugation</b>	Unconjugated
<b>Purification</b>	Purified from goat serum by ammonium sulphate precipitation followed by antigen affinity chromatography using the immunizing peptide.
<b>Dilution Range</b>	Peptide ELISA: antibody detection limit dilution 1:4000. WB: Approx 25kDa band observed in Human Liver and Ovary lysates and in MCF7 cell lysates, and approx. 25kDa and 30kDa in U251 cell lysate (calculated MW of 30.0kDa according to NP_000745.1)
<b>Formulation</b>	0.5 mg/ml in Tris saline, 0.02% sodium azide, pH7.3 with 0.5% bovine serum albumin. NA
<b>Isotype</b>	IgG
<b>Storage Instruction</b>	Store at -20°C on receipt and minimise freeze-thaw cycles.

### TARGET INFORMATION

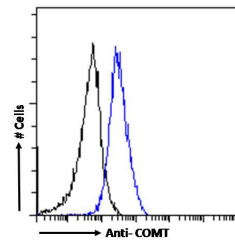
<b>Gene ID</b>	1312
<b>Gene Symbol</b>	COMT
<b>Uniprot ID</b>	COMT_HUMAN
<b>Immunogen</b>	
<b>Immunogen Region</b>	N-Term
<b>Specificity</b>	This antibody is expected to recognise both reported isoforms S-COMT NP_009294.1 and MB-COMT NP_000745.1; NP_001128633.1; NP_001128634..
<b>Immunogen Sequence</b>	GDTKEQRILNHVLQC



STJ70636, (2ug/ml) staining of Human Liver (A) and (1ug/ml) Ovary (B) lysate (55Aug protein in RIPA buffer) Detected by chemiluminescence.



STJ70636 (0.5ug/ml) staining of MCF7 (A), (1ug/ml) U251 cell lysate 1 (B) and U251 cell lysate 2 (C) (55Aug protein in RIPA buffer) Detected by chemiluminescence.



STJ70636 Flow cytometric analysis of paraformaldehyde fixed A431 cells (blue line), permeabilized with 0.5% Triton. Primary incubation 1hr (10ug/ml) followed by Alexa Fluor 488 secondary antibody (1ug/ml). IgG control: Unimmunized goat IgG (black line) followed by Alexa Fluor 488 secondary antibody.

This product is suitable for in-vitro studies under the RESEARCH USE ONLY [RUO] licence. This product must not be used as for diagnostic or other medical purposes.  
St John's Laboratory Ltd, Knowledge Dock Business Centre, University Way, London, E16 2RD | Tel: 0208 223 3081