

Anti-Swiprosin 1/EFHD2 antibody (C-Term) (STJ70621)

STJ70621

GENERAL INFORMATION

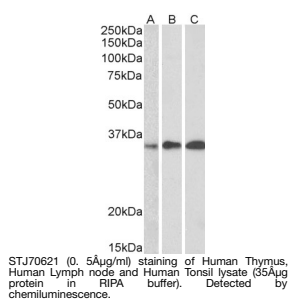
Product Type	Primary antibodies
Short Description	Goat polyclonal antibody anti-Swiprosin 1/EFHD2 (C-Term) is suitable for use in ELISA and Western Blot research applications.
Applications	Pep-ELISA/WB
Host/Source	Goat
Reactivity	Human/Mouse/Rat/Dog/Cow

PRODUCT PROPERTIES

Clonality	Polyclonal
Clone ID	
Concentration	0.5 mg/mL
Conjugation	Unconjugated
Purification	Purified from goat serum by ammonium sulphate precipitation followed by antigen affinity chromatography using the immunizing peptide.
Dilution Range	Peptide ELISA: antibody detection limit dilution 1:128000. WB: Approx 30kDa band observed in Human Thymus, Human Lymph node and Human Tonsil lysates (calculated MW of 26.7kDa according to NP_077305.2). Recommended concentration: 0.5-1.5µg/ml. Pri
Formulation	0.5 mg/ml in Tris saline, 0.02% sodium azide, pH7.3 with 0.5% bovine serum albumin. NA
Isotype	IgG
Storage Instruction	Store at -20°C on receipt and minimise freeze-thaw cycles.

TARGET INFORMATION

Gene ID	79180
Gene Symbol	EFHD2
Uniprot ID	EFHD2_HUMAN
Immunogen	
Immunogen Region	C-Term
Specificity	This antibody does not cross-react with Mouse Swiprosin 2. Data kindly provided by Sebastian Duetting and Dirk Mielenz.
Immunogen Sequence	CAAFKELQSTFK



This product is suitable for in-vitro studies under the RESEARCH USE ONLY [RUO] licence. This product must not be used as for diagnostic or other medical purposes.
St John's Laboratory Ltd, Knowledge Dock Business Centre, University Way, London, E16 2RD | Tel: 0208 223 3081