

Anti-LRP6 antibody (Internal) (STJ70616)

STJ70616

GENERAL INFORMATION

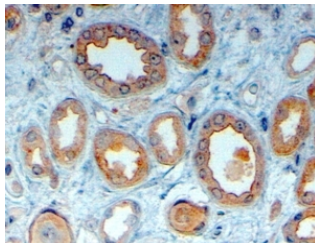
Product Type	Primary antibodies
Short Description	Goat polyclonal antibody anti-LRP6 (Internal) is suitable for use in ELISA, Flow Cytometry and Immunohistochemistry research applications.
Applications	Pep-ELISA/FC/IHC
Host/Source	Goat
Reactivity	Human/Mouse/Rat/Dog

PRODUCT PROPERTIES

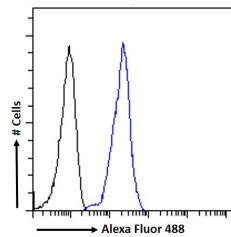
Clonality	Polyclonal
Clone ID	
Concentration	0.5 mg/mL
Conjugation	Unconjugated
Purification	Purified from goat serum by ammonium sulphate precipitation followed by antigen affinity chromatography using the immunizing peptide.
Dilution Range	Peptide ELISA: antibody detection limit dilution 1:64000. IHC: In paraffin embedded Human Kidney shows luminal membrane staining in DCT. Recommended concentration: 4-6µg/ml. FC: Flow cytometric analysis of K562 cells. Recommended concentration 0.5 mg/ml in Tris saline, 0.02% sodium azide, pH7.3 with 0.5% bovine serum albumin. NA
Formulation	0.5 mg/ml in Tris saline, 0.02% sodium azide, pH7.3 with 0.5% bovine serum albumin. NA
Isotype	IgG
Storage Instruction	Store at -20°C on receipt and minimise freeze-thaw cycles.

TARGET INFORMATION

Gene ID	4040
Gene Symbol	LRP6
Uniprot ID	LRP6_HUMAN
Immunogen	
Immunogen Region	Internal
Specificity	This antibody is expected to recognise an epitope corresponding to aa 1546-1560 of human LRP6 protein.
Immunogen Sequence	CMTSVATAKGYTSDL



STJ70616 (4µg/ml) staining of paraffin embedded Human Kidney. Steamed antigen retrieval with citrate buffer pH 6, HRP-staining.



STJ70616 Flow cytometric analysis of paraformaldehyde fixed K562 cells (blue line), permeabilized with 0.5% Triton. Primary incubation 1hr (10µg/ml) followed by Alexa Fluor 488 secondary antibody (1µg/ml). IgG control: Unimmunized goat IgG (black line) followed by Alexa Fluor 488 secondary antibody.

This product is suitable for in-vitro studies under the RESEARCH USE ONLY [RUO] licence. This product must not be used as for diagnostic or other medical purposes.
St John's Laboratory Ltd, Knowledge Dock Business Centre, University Way, London, E16 2RD | Tel: 0208 223 3081