

Anti-SCARF1/SREC antibody (Internal) (STJ70594)

STJ70594

GENERAL INFORMATION

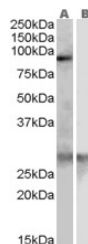
Product Type	Primary antibodies
Short Description	Goat polyclonal antibody anti-SCARF1/SREC (Internal) is suitable for use in ELISA and Western Blot research applications.
Applications	Pep-ELISA/WB
Host/Source	Goat
Reactivity	Human

PRODUCT PROPERTIES

Clonality	Polyclonal
Clone ID	
Concentration	0.5 mg/mL
Conjugation	Unconjugated
Purification	Purified from goat serum by ammonium sulphate precipitation followed by antigen affinity chromatography using the immunizing peptide.
Dilution Range	Peptide ELISA: antibody detection limit dilution 1:64000. WB: Approx 85-90kDa band observed in Human Heart lysates (calculated MW of 87.4kDa according to NP_003684.2). Recommended concentration: 0.3-1.0µg/ml. Primary incubation was 1 hour. An add 0.5 mg/ml in Tris saline, 0.02% sodium azide, pH7.3 with 0.5% bovine serum albumin. NA
Formulation	
Isotype	IgG
Storage Instruction	Store at -20°C on receipt and minimise freeze-thaw cycles.

TARGET INFORMATION

Gene ID	8578
Gene Symbol	SCARF1
Uniprot ID	SREC_HUMAN
Immunogen	
Immunogen Region	Internal
Specificity	This antibody is expected to recognise all three reported isoforms (NP_003684.2; NP_663325.1; NP_663327.2). Epitope corresponding to aa 20-31, mapping to the mature human SCARF1/SREC1 protein.
Immunogen Sequence	SELDPKGQHVC



STJ70594 (0.3µg/ml) staining of Human Heart lysate (35µg protein in RIPA buffer) with (B) and without (A) blocking with the immunising peptide. Detected by chemiluminescence.