

## Anti-TRAC-1/RNF125 antibody (C-Term) (STJ70554)

STJ70554

### GENERAL INFORMATION

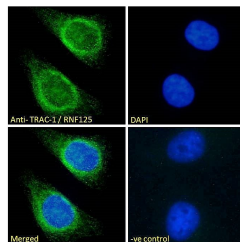
|                          |   |
|--------------------------|---|
| <b>Product Type</b>      | Primary antibodies  |
| <b>Short Description</b> | Goat polyclonal antibody anti-TRAC-1/RNF125 (C-Term) is suitable for use in ELISA, Immunofluorescence and Flow Cytometry research applications. |
| <b>Applications</b>      | Pep-ELISA/IF/FC   |
| <b>Host/Source</b>       | Goat  |
| <b>Reactivity</b>        | Human/Mouse/Rat/Dog/Pig/Cow   |

### PRODUCT PROPERTIES

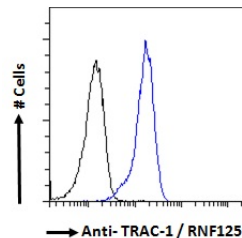
|                       |  |
|-----------------------|--|
| <b>Clonality</b>      | Polyclonal   |
| <b>Clone ID</b>       |  |
| <b>Concentration</b>  | 0.5 mg/mL  |
| <b>Conjugation</b>    | Unconjugated   |
| <b>Purification</b>   | Purified from goat serum by ammonium sulphate precipitation followed by antigen affinity chromatography using the immunizing peptide.  |
| <b>Dilution Range</b> | Peptide ELISA: antibody detection limit dilution 1:8000.<br>IF: Strong expression of the protein seen in the endoplasmic reticulum/Golgi of HeLa cells. Recommended concentration: 10µg/mL.<br>FC: Flow cytometric analysis of HeLa cells. Recommended conc 0.5 mg/mL in Tris saline, 0.02% sodium azide, pH7.3 with 0.5% bovine serum albumin. NA |
| <b>Formulation</b>    | 0.5 mg/mL in Tris saline, 0.02% sodium azide, pH7.3 with 0.5% bovine serum albumin. NA   |
| <b>Isotype</b>        | IgG  |
| <b>Storage</b>        | Store at -20°C on receipt and minimise freeze-thaw cycles.   |
| <b>Instruction</b>    |  |

### TARGET INFORMATION

|                           |              |
|---------------------------|--------------|
| <b>Gene ID</b>            | 54941        |
| <b>Gene Symbol</b>        | RNF125       |
| <b>Uniprot ID</b>         | RN125_HUMAN  |
| <b>Immunogen</b>          |              |
| <b>Immunogen Region</b>   | C-Term       |
| <b>Specificity</b>        |              |
| <b>Immunogen Sequence</b> | RSLEYVNHSNTT |



STJ70554 Immunofluorescence analysis of paraformaldehyde fixed HeLa cells, permeabilized with 0.15% Triton. Primary incubation 1hr (10µg/ml) followed by Alexa Fluor 488 secondary antibody (2µg/ml), showing endoplasmic reticulum/Golgi and some nuclear staining. The nuclear stain is DAPI (blue). Negative control: Unimmunized goat IgG (10µg/ml) followed by Alexa Fluor 488 secondary antibody (2µg/ml).



STJ70554 Flow cytometric analysis of paraformaldehyde fixed HeLa cells (blue line), permeabilized with 0.5% Triton. Primary incubation 1hr (10µg/ml) followed by Alexa Fluor 488 secondary antibody (1µg/ml). IgG control: Unimmunized goat IgG (black line) followed by Alexa Fluor 488 secondary antibody.

This product is suitable for in-vitro studies under the RESEARCH USE ONLY [RUO] licence. This product must not be used as for diagnostic or other medical purposes.  
St John's Laboratory Ltd, Knowledge Dock Business Centre, University Way, London, E16 2RD | Tel: 0208 223 3081