

## Anti-ARPC3 antibody (C-Term) (STJ70540)

STJ70540

### GENERAL INFORMATION

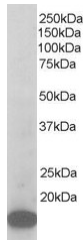
<b>Product Type</b>	Primary antibodies
<b>Short Description</b>	Goat polyclonal antibody anti-ARPC3 (C-Term) is suitable for use in ELISA and Western Blot research applications.
<b>Applications</b>	Pep-ELISA/WB
<b>Host/Source</b>	Goat
<b>Reactivity</b>	Human/Mouse/Rat/Dog/Cow

### PRODUCT PROPERTIES

<b>Clonality</b>	Polyclonal
<b>Clone ID</b>	
<b>Concentration</b>	0.5 mg/mL
<b>Conjugation</b>	Unconjugated
<b>Purification</b>	Purified from goat serum by ammonium sulphate precipitation followed by antigen affinity chromatography using the immunizing peptide.
<b>Dilution Range</b>	Peptide ELISA: antibody detection limit dilution 1:16000. WB: Band observed just below 20kDa marker in HeLa, Human Brain and Mouse Brain lysates (predicted MW of 20kDa according to NP_005710). Recommended for use at 1-3µg/ml. Primary incubation w
<b>Formulation</b>	0.5 mg/ml in Tris saline, 0.02% sodium azide, pH7.3 with 0.5% bovine serum albumin. NA
<b>Isotype</b>	IgG
<b>Storage Instruction</b>	Store at -20°C on receipt and minimise freeze-thaw cycles.

### TARGET INFORMATION

<b>Gene ID</b>	10094
<b>Gene Symbol</b>	ARPC3
<b>Uniprot ID</b>	ARPC3_HUMAN
<b>Immunogen</b>	
<b>Immunogen Region</b>	C-Term
<b>Specificity</b>	Please note there are two hypothetical proteins called similar to the Arp2/3 protein complex subunit p21-Arc" that are virtually identical (CAC14083, XP_208062)."
<b>Immunogen Sequence</b>	RQFMNKSLSGPGQ



STJ70540 staining (1Åµg/ml) of Mouse Brain lysate (RIPA buffer, 35Åµg total protein per lane). Detected by chemiluminescence.

This product is suitable for in-vitro studies under the RESEARCH USE ONLY [RUO] licence. This product must not be used as for diagnostic or other medical purposes.  
St John's Laboratory Ltd, Knowledge Dock Business Centre, University Way, London, E16 2RD | Tel: 0208 223 3081