

Anti-SM22 Alpha/Transgelin antibody (C-Term) (STJ70510)

STJ70510

GENERAL INFORMATION

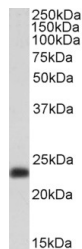
Product Type	Primary antibodies
Short Description	Goat polyclonal antibody anti-SM22 Alpha/Transgelin (C-Term) is suitable for use in ELISA and Western Blot research applications.
Applications	Pep-ELISA/WB
Host/Source	Goat
Reactivity	Human/Mouse/Rat/Dog/Cow

PRODUCT PROPERTIES

Clonality	Polyclonal
Clone ID	
Concentration	0.5 mg/mL
Conjugation	Unconjugated
Purification	Purified from goat serum by ammonium sulphate precipitation followed by antigen affinity chromatography using the immunizing peptide.
Dilution Range	Peptide ELISA: antibody detection limit dilution 1:32000. WB: Approx 24kDa band observed in Human Skeletal Muscle and Testis lysates, and approx 25kDa in Mouse Skeletal Muscle lysates (calculated MW of 22.6kDa according to Human NP_003177.2 and M
Formulation	0.5 mg/ml in Tris saline, 0.02% sodium azide, pH7.3 with 0.5% bovine serum albumin. NA
Isotype	IgG
Storage Instruction	Store at -20°C on receipt and minimise freeze-thaw cycles.

TARGET INFORMATION

Gene ID	6876
Gene Symbol	TAGLN
Uniprot ID	TAGL_HUMAN
Immunogen	
Immunogen Region	C-Term
Specificity	NP_003177.2 and NP_001001522.1 represent identical protein. The transgelin protein is found in fibroblasts and smooth muscle and is known as a transformation or shape change protein that is involved with actin cross-linking. Transgelin is one of the
Immunogen Sequence	MTGYGRPRQIIS



STJ70510 (0.3 µg/ml) staining of Human Testes lysate (35 µg protein in RIPA buffer). Detected by chemiluminescence.

This product is suitable for in-vitro studies under the RESEARCH USE ONLY [RUO] licence. This product must not be used as for diagnostic or other medical purposes.
St John's Laboratory Ltd, Knowledge Dock Business Centre, University Way, London, E16 2RD | Tel: 0208 223 3081