

Anti-SH3BP1 antibody (C-Term) (STJ70507)

STJ70507

GENERAL INFORMATION

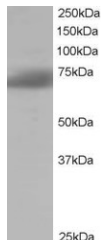
Product Type	Primary antibodies
Short Description	Goat polyclonal antibody anti-SH3BP1 (C-Term) is suitable for use in ELISA, Western Blot, Immunohistochemistry, Immunocytochemistry and Immunofluorescence research applications.
Applications	Pep-ELISA/WB/IHC/ICC/IF
Host/Source	Goat
Reactivity	Human

PRODUCT PROPERTIES

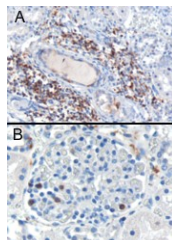
Clonality	Polyclonal
Clone ID	
Concentration	0.5 mg/mL
Conjugation	Unconjugated
Purification	Purified from goat serum by ammonium sulphate precipitation followed by antigen affinity chromatography using the immunizing peptide.
Dilution Range	Peptide ELISA: antibody detection limit dilution 1:16000. WB: Approx 70kDa band observed in Human Lung and Kidney lysates (calculated MW of 75.7kDa according to NP_061830.3). Recommended for use at 1-3µg/mL. IHC: In paraffin embedded Human Ki
Formulation	0.5 mg/ml in Tris saline, 0.02% sodium azide, pH7.3 with 0.5% bovine serum albumin. NA
Isotype	IgG
Storage	Store at -20°C on receipt and minimise freeze-thaw cycles.
Instruction	

TARGET INFORMATION

Gene ID	23616
Gene Symbol	SH3BP1
Uniprot ID	3BP1_HUMAN
Immunogen	
Immunogen Region	C-Term
Specificity	
Immunogen Sequence	PQPRPRSLASETN



STJ70507 staining (1µg/ml) of Human Brain lysate (RIPA buffer, 35µg total protein per lane). Primary incubated for 1 hour. Detected by chemiluminescence.



STJ70507 (0.3µg/ml) staining of paraffin embedded Human Kidney. Cytoplasmic staining of lymphocytes A) in the interstitial parenchyma of the kidney. B) in a glomerulus of the kidney. Microwaved antigen retrieval with citrate buffer pH 6, HRP-staining.

This product is suitable for in-vitro studies under the RESEARCH USE ONLY [RUO] licence. This product must not be used as for diagnostic or other medical purposes.
St John's Laboratory Ltd, Knowledge Dock Business Centre, University Way, London, E16 2RD | Tel: 0208 223 3081