

Anti-Activin receptor-like kinase 1 antibody (C-Term) (STJ70505)

STJ70505

GENERAL INFORMATION

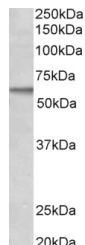
| | |
|--------------------------|--|
| Product Type | Primary antibodies |
| Short Description | Goat polyclonal antibody anti-Activin receptor-like kinase 1 (C-Term) is suitable for use in ELISA and Western Blot research applications. |
| Applications | Pep-ELISA/WB |
| Host/Source | Goat |
| Reactivity | Human |

PRODUCT PROPERTIES

| | |
|----------------------------|--|
| Clonality | Polyclonal |
| Clone ID | |
| Concentration | 0.5 mg/mL |
| Conjugation | Unconjugated |
| Purification | Purified from goat serum by ammonium sulphate precipitation followed by antigen affinity chromatography using the immunizing peptide. |
| Dilution Range | Peptide ELISA: antibody detection limit dilution 1:32000. WB: Approx 60kDa band observed in lysates of cell line MCF7 (calculated MW of 56.1kDa according to NP_000011.2). Recommended concentration: 1-3µg/ml. |
| Formulation | 0.5 mg/ml in Tris saline, 0.02% sodium azide, pH7.3 with 0.5% bovine serum albumin. NA |
| Isotype | IgG |
| Storage Instruction | Store at -20°C on receipt and minimise freeze-thaw cycles. |

TARGET INFORMATION

| | |
|---------------------------|--|
| Gene ID | 94 |
| Gene Symbol | ACVRL1 |
| Uniprot ID | ACVL1_HUMAN |
| Immunogen | |
| Immunogen Region | C-Term |
| Specificity | Please note that this product is not to be confused with the similarly named ALK (anaplastic lymphoma kinase, GenelD 238). Reported variant represent identical protein: NP_000011.2; NP_001070869.1 |
| Immunogen Sequence | KISNSPEKPKVIQ |



STJ70505 (2µg/ml) staining of MCF7 lysate (35µg protein in RIPA buffer). Primary incubation was 1 hour. Detected by chemiluminescence.

This product is suitable for in-vitro studies under the RESEARCH USE ONLY [RUO] licence. This product must not be used as for diagnostic or other medical purposes.
St John's Laboratory Ltd, Knowledge Dock Business Centre, University Way, London, E16 2RD | Tel: 0208 223 3081