

Anti-PIST/FIG/GOPC antibody (C-Term) (STJ70493)

STJ70493

GENERAL INFORMATION

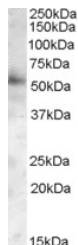
Product Type	Primary antibodies
Short Description	Goat polyclonal antibody anti-PIST/FIG/GOPC (C-Term) is suitable for use in ELISA, Western Blot and Immunofluorescence research applications.
Applications	Pep-ELISA/WB/IF
Host/Source	Goat
Reactivity	Human/Dog/Cow

PRODUCT PROPERTIES

Clonality	Polyclonal
Clone ID	
Concentration	0.5 mg/mL
Conjugation	Unconjugated
Purification	Purified from goat serum by ammonium sulphate precipitation followed by antigen affinity chromatography using the immunizing peptide.
Dilution Range	Peptide ELISA: antibody detection limit dilution 1:128000. WB: Approx. 55kDa band observed in Human Brain (Frontal Cortex) lysates (calculated MW of 50.5kDa according to NP_065132.1). Recommended concentration: 0.05-0.2µg/ml. IF: This product
Formulation	0.5 mg/ml in Tris saline, 0.02% sodium azide, pH7.3 with 0.5% bovine serum albumin. NA
Isotype	IgG
Storage	Store at -20°C on receipt and minimise freeze-thaw cycles.
Instruction	

TARGET INFORMATION

Gene ID	57120
Gene Symbol	GOPC
Uniprot ID	GOPC_HUMAN
Immunogen	
Immunogen Region	C-Term
Specificity	This antibody is expected to recognize both reported isoforms (NP_065132.1; NP_001017408.1).
Immunogen Sequence	LDDLHTLYHKKS



STJ70493 (0.05µg/ml) staining of Human Frontal Cortex lysate (35µg protein in RIPA buffer). Primary incubation was 1 hour. Detected by chemiluminescence.

This product is suitable for in-vitro studies under the RESEARCH USE ONLY [RUO] licence. This product must not be used as for diagnostic or other medical purposes.
St John's Laboratory Ltd, Knowledge Dock Business Centre, University Way, London, E16 2RD | Tel: 0208 223 3081