

Anti-PAR6alpha/PARD6A antibody (C-Term) (STJ70485)

STJ70485

GENERAL INFORMATION

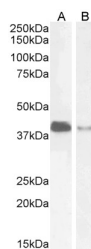
Product Type	Primary antibodies
Short Description	Goat polyclonal antibody anti-PAR6alpha/PARD6A (C-Term) is suitable for use in ELISA, Western Blot, Immunohistochemistry and Flow Cytometry research applications.
Applications	Pep-ELISA/WB/IHC/FC
Host/Source	Goat
Reactivity	Human

PRODUCT PROPERTIES

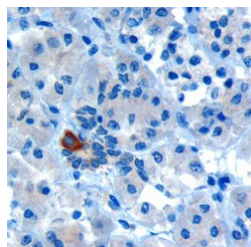
Clonality	Polyclonal
Clone ID	
Concentration	0.5 mg/mL
Conjugation	Unconjugated
Purification	Purified from goat serum by ammonium sulphate precipitation followed by antigen affinity chromatography using the immunizing peptide.
Dilution Range	Peptide ELISA: antibody detection limit dilution 1:8000. WB: Approx 40kDa band observed in lysates of cell lines Jurkat and glioblastoma U251 (calculated MW of 37.4kDa according to NP_058644.1). Recommended concentration: 1-3µg/ml. Primary incubation
Formulation	0.5 mg/ml in Tris saline, 0.02% sodium azide, pH7.3 with 0.5% bovine serum albumin. NA
Isotype	IgG
Storage Instruction	Store at -20°C on receipt and minimise freeze-thaw cycles.

TARGET INFORMATION

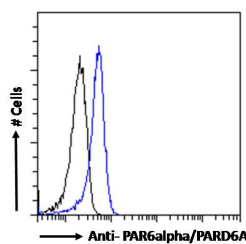
Gene ID	50855
Gene Symbol	PARD6A
Uniprot ID	PAR6A_HUMAN
Immunogen	
Immunogen Region	C-Term
Specificity	This antibody is expected to recognise both reported isoforms (NP_058644.1; NP_001032358.1).
Immunogen Sequence	GSRIKDGSGFSL



STJ70485 (2µg/ml) staining of Jurkat (A) and U251 (B) cell lysate (35µg protein in RIPA buffer). Detected by chemiluminescence.



STJ70485 (10µg/ml) staining of paraffin embedded Human Pancreas. Microwaved antigen retrieval with Tris/EDTA buffer pH9, HRP-staining.



STJ70485 Flow cytometric analysis of parafomaldehyde fixed Jurkat cells (blue line), permeabilized with 0.5% Triton. Primary incubation 1hr (10µg/ml) followed by Alexa Fluor 488 secondary antibody (1µg/ml). IgG control: Unimmunized goat IgG (black line) followed by Alexa Fluor 488 secondary antibody.

This product is suitable for in-vitro studies under the RESEARCH USE ONLY [RUO] licence. This product must not be used as for diagnostic or other medical purposes.
St John's Laboratory Ltd, Knowledge Dock Business Centre, University Way, London, E16 2RD | Tel: 0208 223 3081