

Anti-LMO7/FBXO20 antibody (Internal) (STJ70480)

STJ70480

GENERAL INFORMATION

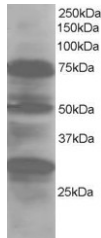
Product Type	Primary antibodies
Short Description	Goat polyclonal antibody anti-LMO7/FBXO20 (Internal) is suitable for use in ELISA and Western Blot research applications.
Applications	Pep-ELISA/WB
Host/Source	Goat
Reactivity	Human/Mouse/Rat/Dog

PRODUCT PROPERTIES

Clonality	Polyclonal
Clone ID	
Concentration	0.5 mg/mL
Conjugation	Unconjugated
Purification	Purified from goat serum by ammonium sulphate precipitation followed by antigen affinity chromatography using the immunizing peptide.
Dilution Range	Peptide ELISA: antibody detection limit dilution 1:32000. WB: Approx 70-75kDa band and approx 30kDa band observed in Human Lung lysates (predicted MWs of 92kDa according to AAD33924.1-however our result agrees with Putilina et al as below). A min 0.5 mg/ml in Tris saline, 0.02% sodium azide, pH7.3 with 0.5% bovine serum albumin. NA
Formulation	
Isotype	IgG
Storage Instruction	Store at -20°C on receipt and minimise freeze-thaw cycles.

TARGET INFORMATION

Gene ID	4008
Gene Symbol	LMO7
Uniprot ID	LMO7_HUMAN
Immunogen	
Immunogen Region	Internal
Specificity	Please note that the amino acid sequence of the immunizing peptide differs one amino acid from the current NCBI accession numbers (NP_005349.3, NP_056667.2). This antibody is expected to recognise both reported isoforms (NP_005349.3; NP_056667.2).
Immunogen Sequence	ESTCVSASLPRS



STJ70480 staining (1µg/ml) of Human Lung lysate (RIPA buffer, 30µg total protein per lane). Primary incubated for 1 hour. Detected by western blot using chemiluminescence.

This product is suitable for in-vitro studies under the RESEARCH USE ONLY [RUO] licence. This product must not be used as for diagnostic or other medical purposes.
St John's Laboratory Ltd, Knowledge Dock Business Centre, University Way, London, E16 2RD | Tel: 0208 223 3081