

Anti-GIPC1/NIP antibody (C-Term) (STJ70475)

STJ70475

GENERAL INFORMATION

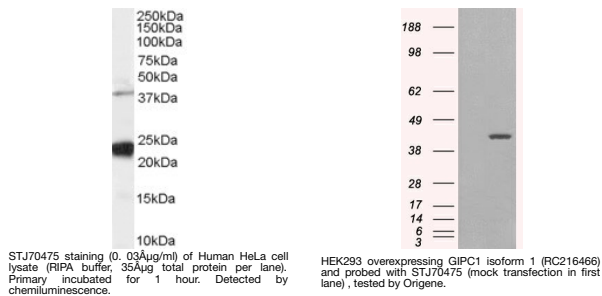
Product Type	Primary antibodies
Short Description	Goat polyclonal antibody anti-GIPC1/NIP (C-Term) is suitable for use in ELISA and Western Blot research applications.
Applications	Pep-ELISA/WB
Host/Source	Goat
Reactivity	Human/Mouse/Rat/Cow

PRODUCT PROPERTIES

Clonality	Polyclonal
Clone ID	
Concentration	0.5 mg/mL
Conjugation	Unconjugated
Purification	Purified from goat serum by ammonium sulphate precipitation followed by antigen affinity chromatography using the immunizing peptide.
Dilution Range	Peptide ELISA: antibody detection limit dilution 1:128000. WB: Approx 38kDa and strong 23-24kDa bands observed in lysates of cell line HeLa, and approx 24kDa also observed in Human Pancreas, Kidney and Muscle lysates (calculated MW of 36.0kDa acc
Formulation	0.5 mg/ml in Tris saline, 0.02% sodium azide, pH7.3 with 0.5% bovine serum albumin. NA
Isotype	IgG
Storage Instruction	Store at -20°C on receipt and minimise freeze-thaw cycles.

TARGET INFORMATION

Gene ID	10755
Gene Symbol	GIPC1
Uniprot ID	GIPC1_HUMAN
Immunogen	
Immunogen Region	C-Term
Specificity	This antibody is expected to recognize both isoform 1 (NP_005707.1, NP_974197.1 and NP_974199.1) and isoform 2 (NP_974196.1, NP_974198.1 and NP_974223.1).
Immunogen Sequence	GAIGDAKVGRY



This product is suitable for in-vitro studies under the RESEARCH USE ONLY [RUO] licence. This product must not be used as for diagnostic or other medical purposes.
St John's Laboratory Ltd, Knowledge Dock Business Centre, University Way, London, E16 2RD | Tel: 0208 223 3081