

Anti-P114-RHO-GEF/ARHGEF18 antibody (C-Term) (STJ70465)

STJ70465

GENERAL INFORMATION

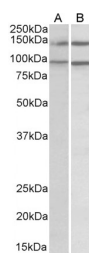
| | |
|--------------------------|---|
| Product Type | Primary antibodies |
| Short Description | Goat polyclonal antibody anti-P114-RHO-GEF/ARHGEF18 (C-Term) is suitable for use in ELISA, Western Blot and Immunofluorescence research applications. |
| Applications | Pep-ELISA/WB/IF |
| Host/Source | Goat |
| Reactivity | Human |

PRODUCT PROPERTIES

| | |
|----------------------------|--|
| Clonality | Polyclonal |
| Clone ID | |
| Concentration | 0.5 mg/mL |
| Conjugation | Unconjugated |
| Purification | Purified from goat serum by ammonium sulphate precipitation followed by antigen affinity chromatography using the immunizing peptide. |
| Dilution Range | Peptide ELISA: antibody detection limit dilution 1:128000. WB: Approx 140+90kDa band observed in lysates of cell line Daudi and Caco-2 (calculated MW of 114kDa according to NP_056133.2 and 131kDa according to NP_001124427.1). Recommended concentr 0.5 mg/ml in Tris saline, 0.02% sodium azide, pH7.3 with 0.5% bovine serum albumin. NA |
| Formulation | 0.5 mg/ml in Tris saline, 0.02% sodium azide, pH7.3 with 0.5% bovine serum albumin. NA |
| Isotype | IgG |
| Storage Instruction | Store at -20°C on receipt and minimise freeze-thaw cycles. |

TARGET INFORMATION

| | |
|---------------------------|--|
| Gene ID | 23370 |
| Gene Symbol | ARHGEF18 |
| Uniprot ID | ARHGI_HUMAN |
| Immunogen | |
| Immunogen Region | C-Term |
| Specificity | This antibody is expected to recognize both reported isoforms (NP_056133.2; NP_001124427.1). |
| Immunogen Sequence | SAKEDASKEDVIF |



STJ70465 (0.5 µg/ml) staining of lysates of cell lines Daudi (A) and Caco-2 (B) (35 µg protein in RIPA buffer). Primary incubation was 1 hour. Detected by chemiluminescence.