

Anti-BAP/SIL1 antibody (C-Term) (STJ70416)

STJ70416

GENERAL INFORMATION

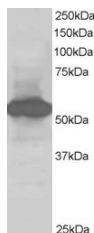
Product Type	Primary antibodies
Short Description	Goat polyclonal antibody anti-BAP/SIL1 (C-Term) is suitable for use in ELISA, Western Blot and Immunohistochemistry research applications.
Applications	Pep-ELISA/WB/IHC
Host/Source	Goat
Reactivity	Human

PRODUCT PROPERTIES

Clonality	Polyclonal
Clone ID	
Concentration	0.5 mg/mL
Conjugation	Unconjugated
Purification	Purified from goat serum by ammonium sulphate precipitation followed by antigen affinity chromatography using the immunizing peptide.
Dilution Range	Peptide ELISA: antibody detection limit dilution 1:8000. WB: Approx 55-60 kDa band observed in Human Liver and Kidney extracts (predicted MW of 53kDa according to NP_071909.1). Recommended concentration: 1-2µg/ml. IHC: Paraffin embedded Human
Formulation	0.5 mg/ml in Tris saline, 0.02% sodium azide, pH7.3 with 0.5% bovine serum albumin. NA
Isotype	IgG
Storage	Store at -20°C on receipt and minimise freeze-thaw cycles.
Instruction	

TARGET INFORMATION

Gene ID	64374
Gene Symbol	SIL1
Uniprot ID	SIL1_HUMAN
Immunogen	
Immunogen Region	C-Term
Specificity	Variants (NP_071909.1; NP_001032722.1) encode the same isoform.
Immunogen Sequence	ELLGSVNSLLKELR



STJ70416 staining (1µg/ml) of Human Kidney lysate (RIPA buffer, 30µg total protein per lane). Primary incubated for 1 hour. Detected by chemiluminescence.

This product is suitable for in-vitro studies under the RESEARCH USE ONLY [RUO] licence. This product must not be used as for diagnostic or other medical purposes.
St John's Laboratory Ltd, Knowledge Dock Business Centre, University Way, London, E16 2RD | Tel: 0208 223 3081