

Anti-FBL2/FBXL2 antibody (N-Term) (STJ70401)

STJ70401

GENERAL INFORMATION

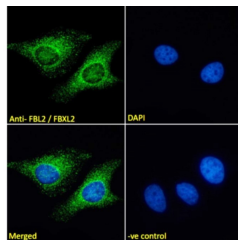
| | |
|--------------------------|--|
| Product Type | Primary antibodies |
| Short Description | Goat polyclonal antibody anti-FBL2/FBXL2 (N-Term) is suitable for use in ELISA, Immunohistochemistry and Immunofluorescence research applications. |
| Applications | Pep-ELISA/IHC/IF |
| Host/Source | Goat |
| Reactivity | Human/Rat/Dog/Cow |

PRODUCT PROPERTIES

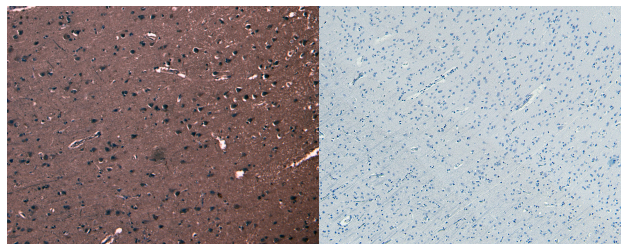
| | |
|----------------------------|---|
| Clonality | Polyclonal |
| Clone ID | |
| Concentration | 0.5 mg/mL |
| Conjugation | Unconjugated |
| Purification | Purified from goat serum by ammonium sulphate precipitation followed by antigen affinity chromatography using the immunizing peptide. |
| Dilution Range | Peptide ELISA: antibody detection limit dilution 1:128000. WB: Preliminary testing showed a band at approx 48kDa in Human Kidney lysate after 0.1µg/ml antibody staining (calculated MW of 47.1kDa according to NP_036289.2). Primary incubation 1 hou |
| Formulation | 0.5 mg/ml in Tris saline, 0.02% sodium azide, pH7.3 with 0.5% bovine serum albumin. NA |
| Isotype | IgG |
| Storage Instruction | Store at -20°C on receipt and minimise freeze-thaw cycles. |

TARGET INFORMATION

| | |
|---------------------------|---------------|
| Gene ID | 25827 |
| Gene Symbol | FBXL2 |
| Uniprot ID | FBXL2_HUMAN |
| Immunogen | |
| Immunogen Region | N-Term |
| Specificity | |
| Immunogen Sequence | VFSNNDEGLINKK |



STJ70401 Immunofluorescence analysis of paraformaldehyde fixed HeLa cells, permeabilized with 0.15% Triton. Primary incubation 1hr (10µg/ml) followed by Alexa Fluor 488 secondary antibody (2µg/ml) showing cytoplasmic staining. The nuclear stain is DAPI (blue). NA NA NA Negative control: Unimmunized goat IgG (10µg/ml) followed by Alexa Fluor 488 secondary antibody (2µg/ml).



STJ70401 (8µg/ml) staining of paraffin embedded Human Cortex. Heat induced antigen retrieval with citrate buffer pH 6, HRP-staining.

STJ70401 Negative Control showing staining of paraffin embedded Human Cortex, with no primary antibody.