

Anti-FOXI1/FKHL10 antibody (C-Term) (STJ70390)

STJ70390

GENERAL INFORMATION

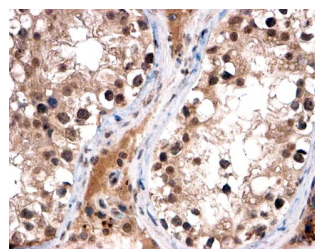
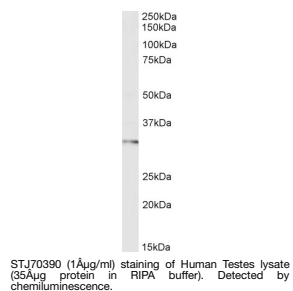
Product Type	Primary antibodies
Short Description	Goat polyclonal antibody anti-FOXI1/FKHL10 (C-Term) is suitable for use in ELISA, Western Blot and Immunohistochemistry research applications.
Applications	Pep-ELISA/WB/IHC
Host/Source	Goat
Reactivity	Human

PRODUCT PROPERTIES

Clonality	Polyclonal
Clone ID	
Concentration	0.5 mg/mL
Conjugation	Unconjugated
Purification	Purified from goat serum by ammonium sulphate precipitation followed by antigen affinity chromatography using the immunizing peptide.
Dilution Range	Peptide ELISA: antibody detection limit dilution 1:8000. WB: Approx 30kDa band observed in Human Testis lysates and in preliminary testing of Human Breast lysate, and approx. 40kDa in preliminary testing of U251 and MCF7 cell lysate I (calculated)
Formulation	0.5 mg/ml in Tris saline, 0.02% sodium azide, pH7.3 with 0.5% bovine serum albumin. NA
Isotype	IgG
Storage Instruction	Store at -20°C on receipt and minimise freeze-thaw cycles.

TARGET INFORMATION

Gene ID	2299
Gene Symbol	FOXI1
Uniprot ID	FOXI1_HUMAN
Immunogen	
Immunogen Region	C-Term
Specificity	This antibody is expected to recognise both reported human isoforms (NP_036320.2; NP_658982.1).
Immunogen Sequence	TSGVLYPREGTEV



This product is suitable for in-vitro studies under the RESEARCH USE ONLY [RUO] licence. This product must not be used as for diagnostic or other medical purposes.
St John's Laboratory Ltd, Knowledge Dock Business Centre, University Way, London, E16 2RD | Tel: 0208 223 3081