

Anti-REV1L antibody (C-Term) (STJ70375)

STJ70375

GENERAL INFORMATION

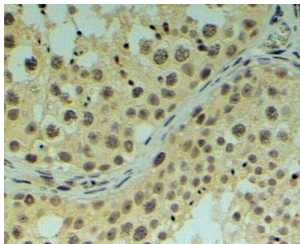
| | |
|--------------------------|---|
| Product Type | Primary antibodies |
| Short Description | Goat polyclonal antibody anti-REV1L (C-Term) is suitable for use in ELISA and Immunohistochemistry research applications. |
| Applications | Pep-ELISA/IHC |
| Host/Source | Goat |
| Reactivity | Human/Mouse/Rat/Dog/Cow |

PRODUCT PROPERTIES

| | |
|----------------------------|---|
| Clonality | Polyclonal |
| Clone ID | |
| Concentration | 0.5 mg/mL |
| Conjugation | Unconjugated |
| Purification | Purified from goat serum by ammonium sulphate precipitation followed by antigen affinity chromatography using the immunizing peptide. |
| Dilution Range | Peptide ELISA: antibody detection limit dilution 1:8000. WB: No signal obtained yet but low background observed in MOLT-4 lysates at up to 1.5µg/ml. We would appreciate any feedback from people in the field-have any results been reported with oth |
| Formulation | 0.5 mg/ml in Tris saline, 0.02% sodium azide, pH7.3 with 0.5% bovine serum albumin. NA |
| Isotype | IgG |
| Storage Instruction | Store at -20°C on receipt and minimise freeze-thaw cycles. |

TARGET INFORMATION

| | |
|---------------------------|--|
| Gene ID | 51455 |
| Gene Symbol | REV1 |
| Uniprot ID | REV1_HUMAN |
| Immunogen | |
| Immunogen Region | C-Term |
| Specificity | This antibody is expected to recognise both reported isoforms. |
| Immunogen Sequence | VLQQTYGSTLKVT |



STJ70375 (4µg/ml) staining of paraffin embedded Human Testis. Sleamed antigen retrieval with Tris/EDTA buffer pH 9, HRP-staining.

This product is suitable for in-vitro studies under the RESEARCH USE ONLY [RUO] licence. This product must not be used as for diagnostic or other medical purposes.
St John's Laboratory Ltd, Knowledge Dock Business Centre, University Way, London, E16 2RD | Tel: 0208 223 3081