

Anti-MDA5/IFIH1 antibody (N-Term) (STJ70370)

STJ70370

GENERAL INFORMATION

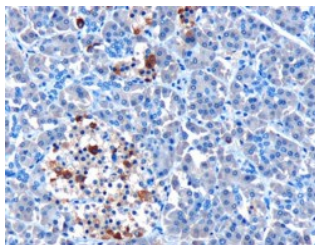
| | |
|--------------------------|--|
| Product Type | Primary antibodies |
| Short Description | Goat polyclonal antibody anti-MDA5/IFIH1 (N-Term) is suitable for use in ELISA, Western Blot, Immunohistochemistry and Flow Cytometry research applications. |
| Applications | Pep-ELISA/WB/IHC/FC |
| Host/Source | Goat |
| Reactivity | Human |

PRODUCT PROPERTIES

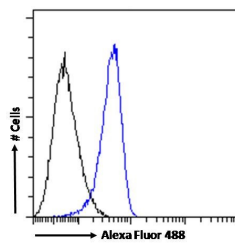
| | |
|-----------------------|--|
| Clonality | Polyclonal |
| Clone ID | |
| Concentration | 0.5 mg/mL |
| Conjugation | Unconjugated |
| Purification | Purified from goat serum by ammonium sulphate precipitation followed by antigen affinity chromatography using the immunizing peptide. |
| Dilution Range | Peptide ELISA: antibody detection limit dilution 1:32000. WB: This antibody has been successfully used in Western blot on African Green Monkey: Sato S et al, Arthritis Rheum. 2009 Jul;60(7):2193-200. PMID: 19565506. IHC: In paraffin embedde |
| Formulation | 0.5 mg/ml in Tris saline, 0.02% sodium azide, pH7.3 with 0.5% bovine serum albumin. NA |
| Isotype | IgG |
| Storage | Store at -20°C on receipt and minimise freeze-thaw cycles. |
| Instruction | |

TARGET INFORMATION

| | |
|---------------------------|---------------|
| Gene ID | 64135 |
| Gene Symbol | IFIH1 |
| Uniprot ID | IFIH1_HUMAN |
| Immunogen | |
| Immunogen Region | N-Term |
| Specificity | |
| Immunogen Sequence | SNGYSTDENFRYL |



STJ70370 (10 μ g/ml) staining of paraffin embedded Human Pancreas. Microwaved antigen retrieval with Tris/EDTA buffer pH9, HRP-staining.



STJ70370 Flow cytometric analysis of paraformaldehyde fixed K562 cells (blue line), permeabilized with 0.5% Triton. Primary incubation 1hr (10 μ g/ml) followed by Alexa Fluor 488 secondary antibody (1 μ g/ml). NA NA NA IgG control: Unimmunized goat IgG (black line) followed by Alexa Fluor 488 secondary antibody.

This product is suitable for in-vitro studies under the RESEARCH USE ONLY [RUO] licence. This product must not be used as for diagnostic or other medical purposes.

St John's Laboratory Ltd, Knowledge Dock Business Centre, University Way, London, E16 2RD | Tel: 0208 223 3081