

Anti-Pallidin antibody (C-Term) (STJ70364)

STJ70364

GENERAL INFORMATION

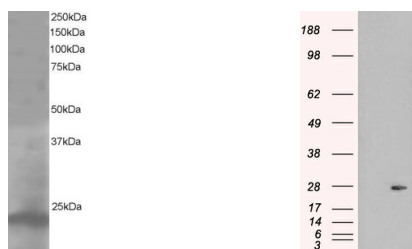
Product Type	Primary antibodies
Short Description	Goat polyclonal antibody anti-Pallidin (C-Term) is suitable for use in ELISA and Western Blot research applications.
Applications	Pep-ELISA/WB
Host/Source	Goat
Reactivity	Human/Mouse/Rat/Pig/Cow

PRODUCT PROPERTIES

Clonality	Polyclonal
Clone ID	
Concentration	0.5 mg/mL
Conjugation	Unconjugated
Purification	Purified from goat serum by ammonium sulphate precipitation followed by antigen affinity chromatography using the immunizing peptide.
Dilution Range	Peptide ELISA: antibody detection limit dilution 1:32000. WB: Approx 23-24kDa band observed in lysates of cell line A431 (calculated MW of 19.7kDa according to NP_036520.1). In transfected HEK293 transiently expressing PLDN a band of approx. 28kD
Formulation	0.5 mg/ml in Tris saline, 0.02% sodium azide, pH7.3 with 0.5% bovine serum albumin. NA
Isotype	IgG
Storage Instruction	Store at -20°C on receipt and minimise freeze-thaw cycles.

TARGET INFORMATION

Gene ID	26258
Gene Symbol	BLOC1S6
Uniprot ID	BL1S6_HUMAN
Immunogen	
Immunogen Region	C-Term
Specificity	
Immunogen Sequence	EREKQLTARPAKRM



STJ70364 staining (1A μ g/ml) of A431 lysate (RIPA buffer, 35A μ g total protein per lane). Primary incubated for 1 hour. Detected by western blot using chemiluminescence.

HEK293 overexpressing PLDN (RC201514) and probed with STJ70364 (mock transfection in first lane), tested by Origene.

This product is suitable for in-vitro studies under the RESEARCH USE ONLY [RUO] licence. This product must not be used as for diagnostic or other medical purposes.
St John's Laboratory Ltd, Knowledge Dock Business Centre, University Way, London, E16 2RD | Tel: 0208 223 3081