

Anti-CARD11 antibody (C-Term) (STJ70336)

STJ70336

GENERAL INFORMATION

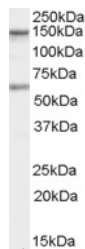
Product Type	Primary antibodies
Short Description	Goat polyclonal antibody anti-CARD11 (C-Term) is suitable for use in ELISA, Western Blot and Immunohistochemistry research applications.
Applications	Pep-ELISA/WB/IHC
Host/Source	Goat
Reactivity	Human/Mouse/Dog/Cow

PRODUCT PROPERTIES

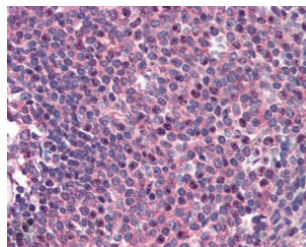
Clonality	Polyclonal
Clone ID	
Concentration	0.5 mg/mL
Conjugation	Unconjugated
Purification	Purified from goat serum by ammonium sulphate precipitation followed by antigen affinity chromatography using the immunizing peptide.
Dilution Range	Peptide ELISA: antibody detection limit dilution 1:32000. WB: Approx 150+65kDa bands observed in lysates of cell line Jurkat (calculated MW of 133kDa according to NP_115791.2). Recommended concentration: 1-3µg/ml. An additional band of unknown ide
Formulation	0.5 mg/ml in Tris saline, 0.02% sodium azide, pH7.3 with 0.5% bovine serum albumin. NA
Isotype	IgG
Storage Instruction	Store at -20°C on receipt and minimise freeze-thaw cycles.

TARGET INFORMATION

Gene ID	84433
Gene Symbol	CARD11
Uniprot ID	CAR11_HUMAN
Immunogen	
Immunogen Region	C-Term
Specificity	
Immunogen Sequence	QRKTIWVDEDQL



STJ70336 staining (1µg/ml) of Human Jurkat cells (RIPA buffer, 35Aµg total protein per lane). Primary incubated for 1 hour. Detected by chemiluminescence.



STJ70336 (2µg/ml) staining of paraffin embedded Human Spleen. Steamed antigen retrieval with citrate buffer pH 6, AP-staining.

This product is suitable for in-vitro studies under the RESEARCH USE ONLY [RUO] licence. This product must not be used as for diagnostic or other medical purposes.
St John's Laboratory Ltd, Knowledge Dock Business Centre, University Way, London, E16 2RD | Tel: 0208 223 3081