

## Anti-PARK7/DJ-1 antibody (C-Term) (STJ70331)

STJ70331

### GENERAL INFORMATION

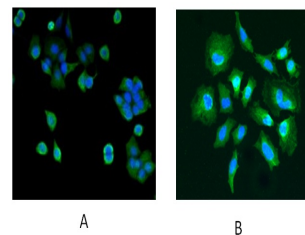
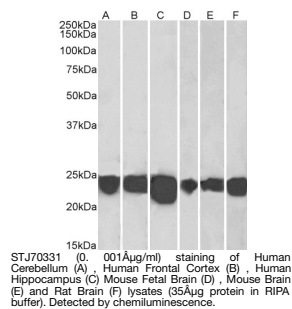
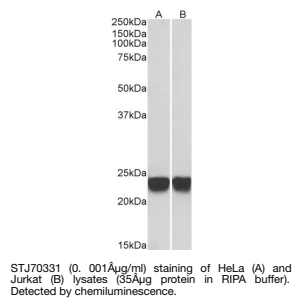
<b>Product Type</b>	Primary antibodies
<b>Short Description</b>	Goat polyclonal antibody anti-PARK7/DJ-1 (C-Term) is suitable for use in ELISA, Western Blot, Immunofluorescence and Immunohistochemistry research applications.
<b>Applications</b>	Pep-ELISA/WB/IF/IHC
<b>Host/Source</b>	Goat
<b>Reactivity</b>	Human/Mouse/Rat

### PRODUCT PROPERTIES

<b>Clonality</b>	Polyclonal
<b>Clone ID</b>	
<b>Concentration</b>	0.5 mg/mL
<b>Conjugation</b>	Unconjugated
<b>Purification</b>	Purified from goat serum by ammonium sulphate precipitation followed by antigen affinity chromatography using the immunizing peptide.
<b>Dilution Range</b>	Peptide ELISA: antibody detection limit dilution 1:128000. WB: Approx 24kDa band observed in lysates of cell lines HeLa and Jurkat and of Human Brain (Cerebellum, Hippocampus, Frontal Cortex) and rodent Brain lysates (calculated MW of 19.9kDa acc
<b>Formulation</b>	0.5 mg/ml in Tris saline, 0.02% sodium azide, pH7.3 with 0.5% bovine serum albumin. NA
<b>Isotype</b>	IgG
<b>Storage Instruction</b>	Store at -20°C on receipt and minimise freeze-thaw cycles.

### TARGET INFORMATION

<b>Gene ID</b>	11315
<b>Gene Symbol</b>	PARK7
<b>Uniprot ID</b>	PARK7_HUMAN
<b>Immunogen</b>	
<b>Immunogen Region</b>	C-Term
<b>Specificity</b>	Reported variants (NP_001116849.1; NP_009193.2) represent the same protein.
<b>Immunogen Sequence</b>	AAQVKAPLVKLD



Immunofluorescence staining of MCF7 (A) and HeLa (B) cells with 5 $\mu$ g/ml STJ70331 antibody. Detected with Rabbit anti-goat IgG-Alexafluor488 antibody at 1:1000. Nuclei Counterstained with DAPI.