

Anti-GERP/TRIM8 antibody (C-Term) (STJ70329)

STJ70329

GENERAL INFORMATION

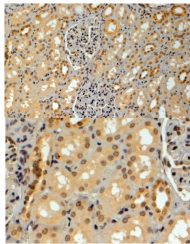
Product Type	Primary antibodies
Short Description	Goat polyclonal antibody anti-GERP/TRIM8 (C-Term) is suitable for use in ELISA, Immunohistochemistry, Immunofluorescence and Flow Cytometry research applications.
Applications	Pep-ELISA/IHC/IF/FC
Host/Source	Goat
Reactivity	Human/Mouse/Rat/Cow

PRODUCT PROPERTIES

Clonality	Polyclonal
Clone ID	
Concentration	0.5 mg/mL
Conjugation	Unconjugated
Purification	Purified from goat serum by ammonium sulphate precipitation followed by antigen affinity chromatography using the immunizing peptide.
Dilution Range	Peptide ELISA: antibody detection limit dilution 1:128000. IHC: Paraffin embedded Human Kidney. Recommended concentration: 4µg/ml. IF: Strong expression of the protein seen in the nuclei and cytoplasm of A431 and U2OS cells. Recommended conce
Formulation	0.5 mg/ml in Tris saline, 0.02% sodium azide, pH7.3 with 0.5% bovine serum albumin. NA
Isotype	IgG
Storage	Store at -20°C on receipt and minimise freeze-thaw cycles.
Instruction	

TARGET INFORMATION

Gene ID	81603
Gene Symbol	TRIM8
Uniprot ID	TRIM8_HUMAN
Immunogen	
Immunogen Region	C-Term
Specificity	
Immunogen Sequence	YGQPSTKHYVTS



STJ70329 (4µg/ml) staining of paraffin embedded Human Kidney. Steamed antigen retrieval with citrate buffer pH 6, HRP-staining.