

## Anti-PI31/PSMF1-Isoform 1 antibody (C-Term) (STJ70320)

STJ70320

### GENERAL INFORMATION

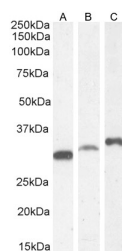
<b>Product Type</b>	Primary antibodies
<b>Short Description</b>	Goat polyclonal antibody anti-PI31/PSMF1-Isoform 1 (C-Term) is suitable for use in ELISA, Western Blot and Immunofluorescence research applications.
<b>Applications</b>	Pep-ELISA/WB/IF
<b>Host/Source</b>	Goat
<b>Reactivity</b>	Human/Mouse/Rat/Dog/Cow

### PRODUCT PROPERTIES

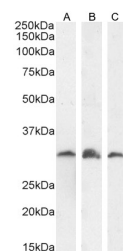
<b>Clonality</b>	Polyclonal
<b>Clone ID</b>	
<b>Concentration</b>	0.5 mg/mL
<b>Conjugation</b>	Unconjugated
<b>Purification</b>	Purified from goat serum by ammonium sulphate precipitation followed by antigen affinity chromatography using the immunizing peptide.
<b>Dilution Range</b>	Peptide ELISA: antibody detection limit dilution 1:32000. WB: Approx 30kDa band observed in lysates of cell line HEK293, approx 30-32kDa in lysates of cell lines K562, NIH3T3, Neuro2a and KNRK, and approx. 35kDa in lysates of cell line LNCaP (cal
<b>Formulation</b>	0.5 mg/ml in Tris saline, 0.02% sodium azide, pH7.3 with 0.5% bovine serum albumin. NA
<b>Isotype</b>	IgG
<b>Storage</b>	Store at -20°C on receipt and minimise freeze-thaw cycles.
<b>Instruction</b>	

### TARGET INFORMATION

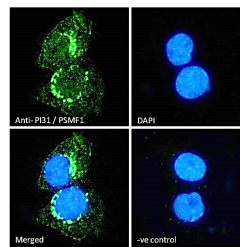
<b>Gene ID</b>	9491
<b>Gene Symbol</b>	PSMF1
<b>Uniprot ID</b>	PSMF1_HUMAN
<b>Immunogen</b>	
<b>Immunogen</b>	C-Term
<b>Region</b>	
<b>Specificity</b>	This antibody is expected to recognize isoform 1 (NP_006805.2 and NP_848693.2).
<b>Immunogen</b>	DHLPPPGYDDMYL
<b>Sequence</b>	



STJ70320 (0.3µg/ml) staining of HEK293 (A), K562 (B) and (1µg/ml) LNCaP (C) cell lysate (35µg protein in RIPA buffer). Detected by chemiluminescence.



STJ70320 (1µg/ml) staining of KNRK (A), NIH3T3 (B) and (0.3µg/ml) Neuro2a (C) cell lysate (35µg protein in RIPA buffer). Detected by chemiluminescence.



STJ70320 Immunofluorescence analysis of paraformaldehyde fixed A431 cells, permeabilized with 0.15% Triton. Primary incubation 1hr (10µg/ml) followed by Alexa Fluor 488 secondary antibody (2µg/ml), showing endoplasmic reticulum and cytoplasmic staining. The nuclear stain is DAPI (blue). Negative control: Unimmunized goat IgG (10µg/ml) followed by Alexa Fluor 488 secondary antibody (2µg/ml).

This product is suitable for in-vitro studies under the RESEARCH USE ONLY [RUO] licence. This product must not be used as for diagnostic or other medical purposes.

St John's Laboratory Ltd, Knowledge Dock Business Centre, University Way, London, E16 2RD | Tel: 0208 223 3081