

Anti-ARIH1/HHARI antibody (C-Term) (STJ70308)

STJ70308

GENERAL INFORMATION

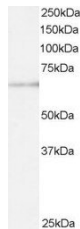
Product Type	Primary antibodies
Short Description	Goat polyclonal antibody anti-ARIH1/HHARI (C-Term) is suitable for use in ELISA, Western Blot and Immunohistochemistry research applications.
Applications	Pep-ELISA/WB/IHC
Host/Source	Goat
Reactivity	Human/Mouse/Cow

PRODUCT PROPERTIES

Clonality	Polyclonal
Clone ID	
Concentration	0.5 mg/mL
Conjugation	Unconjugated
Purification	Purified from goat serum by ammonium sulphate precipitation followed by antigen affinity chromatography using the immunizing peptide.
Dilution Range	Peptide ELISA: antibody detection limit dilution 1:32000. WB: Approx 65kDa band seen in U937 lysate [Predicted MW of approx. 61kDa according to NP_005735]. Recommended for use at 0.2-1µg/ml. Primary incubated for 1 hour. IHC: Paraffin embedde
Formulation	0.5 mg/ml in Tris saline, 0.02% sodium azide, pH7.3 with 0.5% bovine serum albumin. NA
Isotype	IgG
Storage	Store at -20°C on receipt and minimise freeze-thaw cycles.
Instruction	

TARGET INFORMATION

Gene ID	25820
Gene Symbol	ARIH1
Uniprot ID	ARI1_HUMAN
Immunogen	
Immunogen Region	C-Term
Specificity	
Immunogen Sequence	HEGYEKDLWEYIED



STJ70308 staining (0.5 µg/ml) of U937 lysate (RIPA buffer, 30 µg total protein per lane). Primary incubated for 1 hour. Detected by chemiluminescence.

This product is suitable for in-vitro studies under the RESEARCH USE ONLY [RUO] licence. This product must not be used as for diagnostic or other medical purposes.
St John's Laboratory Ltd, Knowledge Dock Business Centre, University Way, London, E16 2RD | Tel: 0208 223 3081