

Anti-HEC1 antibody (C-Term) (STJ70241)

STJ70241

GENERAL INFORMATION

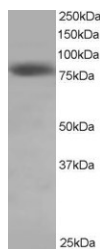
Product Type	Primary antibodies
Short Description	Goat polyclonal antibody anti-HEC1 (C-Term) is suitable for use in ELISA, Western Blot and Immunohistochemistry research applications.
Applications	Pep-ELISA/WB/IHC
Host/Source	Goat
Reactivity	Human

PRODUCT PROPERTIES

Clonality	Polyclonal
Clone ID	
Concentration	0.5 mg/mL
Conjugation	Unconjugated
Purification	Purified from goat serum by ammonium sulphate precipitation followed by antigen affinity chromatography using the immunizing peptide.
Dilution Range	Peptide ELISA: antibody detection limit dilution 1:32000. WB: Approx 75-80kDa band observed in Hela lysate (predicted MW of 74kDa according to NP_006092). Recommended for use at 0.5-2µg/ml. IHC: Paraffin embedded Human Liver and Adrenal Gland
Formulation	0.5 mg/ml in Tris saline, 0.02% sodium azide, pH7.3 with 0.5% bovine serum albumin. NA
Isotype	IgG
Storage Instruction	Store at -20°C on receipt and minimise freeze-thaw cycles.

TARGET INFORMATION

Gene ID	10403
Gene Symbol	NDC80
Uniprot ID	NDC80_HUMAN
Immunogen	
Immunogen Region	C-Term
Specificity	
Immunogen Sequence	YEKKATLIKSSEE



STJ70241 staining (0.5 µg/ml) of Hela lysate (RIPA buffer, 35 µg total protein per lane). Primary incubated for 1 hour. Detected by chemiluminescence.